

# Buying Value: Measures That Matter

Bailit Health

November 14, 2023

**STATE**  
Health & Value  
**STRATEGIES**

*Driving Innovation  
Across States*

*A grantee of the Robert Wood Johnson Foundation*

# About Bailit Health: Presenters

---

**Mary Beth Dyer**



[mbdyer@bailit-health.com](mailto:mbdyer@bailit-health.com)

**Grace Flaherty**



[gflaherty@bailit-health.com](mailto:gflaherty@bailit-health.com)

Working with state agencies and their partners  
to improve health care system performance for all.

<http://www.bailit-health.com/>

# About State Health and Value Strategies

---

State Health and Value Strategies (SHVS) assists states in their efforts to transform health and health care by providing targeted technical assistance to state officials and agencies. The program is a grantee of the Robert Wood Johnson Foundation, led by staff at Princeton University's School of Public and International Affairs. The program connects states with experts and peers to undertake health care transformation initiatives. By engaging state officials, the program provides lessons learned, highlights successful strategies, and brings together states with experts in the field. Learn more at [www.shvs.org](http://www.shvs.org).

*Support for this webinar was provided by the Robert Wood Johnson Foundation.  
The views expressed in this presentation do not necessarily reflect the views of the Foundation.*



# Agenda

1. Purpose of Today's Meeting
2. The Buying Value Measure Selection Tool
3. The Buying Value Benchmark Repository
4. Questions

# Purpose of Today's Meeting

- Review the suite of free Buying Value (BV) tools that can help HHSC save time when considering changes to your managed care performance measures.
  - Demonstrate how the BV measure selection tool can help make metric decisions more objective.
  - Show how to utilize the BV benchmark repository to identify home-grown measures and metrics
- Answer YOUR questions on Buying Value!

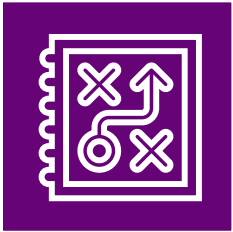
## TX HHSC and Buying Value

- HHSC creates financial and non-financial incentives for managed care organizations (MCOs) and holds them accountable for performance on certain measures.
- HHSC may find Buying Value's resources helpful for assessing the extent to which its Medical At-Risk Measures and Medical Bonus Pool Measures are aligned with:
  1. HHSC's goals for its measures and measure sets
  2. Medicaid Adult and Child Core measures
  3. Other federal measure sets
  4. Other state's MCO performance incentive measures

# What is Buying Value?

- A suite of publicly available resources for purchasers to a) find standard measures, as well as innovative non-HEDIS or homegrown measures and associated benchmarks, and b) develop aligned measure sets.
  1. Groundbreaking research on the lack of quality measure alignment (2013)
  2. The Buying Value Measure Selection Tool (2015)
  3. The Buying Value Benchmark Repository (2018)
- Visit: [www.buyingvalue.org](http://www.buyingvalue.org)

# The Buying Value Measure Selection Tool



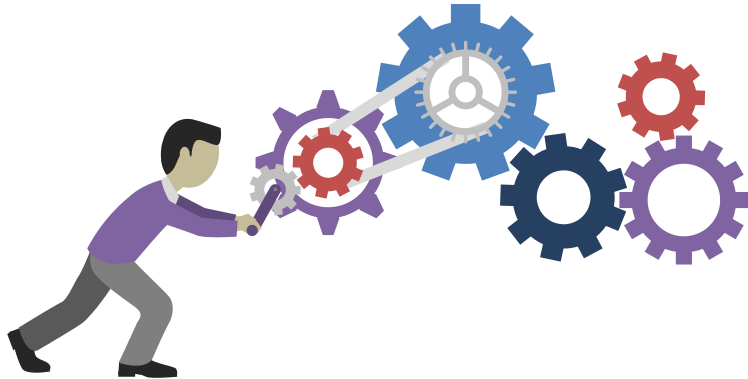
Developed in response to provider complaints about being increasingly subject to growing numbers of measures from payers and regulators.



A suite of resources that enables state agencies, private purchasers, and other stakeholders to select measures and develop aligned measure sets.



# The Buying Value Measure Selection Tool



## Key Features

- Over **840 measures** that can be filtered by 17 domains, 20 conditions, 7 measure types, 9 populations and 13 data sources.
- A **disparities-sensitive status indicator** that allows users to identify measures with an evidence of inequity in the provision of care captured by the measure.
- Functionality to **crosswalk measures to federal, national and state measures sets** and **systematically score** measures against a state's overarching goals for the measure set.

# The Buying Value Measure Selection Tool

## Federal/National Measure Sets (12)

1. CMMI Primary Care First
2. CMS Medicaid and CHIP Child Core Set
3. CMS Medicaid Adult Core Set
4. CMS eCQMs for Eligible Professionals
5. CMS Health Home Measure Set
6. CMS Hospital Value-Based Purchasing
7. CMS Medicare Hospital Compare
8. CMS Medicare Part C&D
9. CMS Medicare Shared Savings Program
10. CMS Merit-based Incentive Payment System
11. Core Quality Measure Collaborative
12. Joint Commission Performance Measures

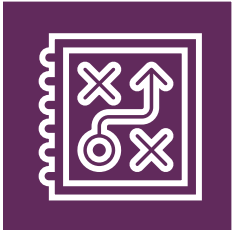
## State Measure Sets (6)

1. California AMP Medi-Cal Managed Care Measure Set
2. Massachusetts Aligned Measure Set
3. Minnesota Integrated Health Partnership Measures
4. Oregon CCO Incentive Measures
5. Rhode Island OHIC Aligned Measure Set for ACOs
6. Washington State Common Measure Set

# Buying Value Measure Selection Tool Tutorial

AutoSave On 5-Buying-Value-Measure-Selection-Tool 2022 3-31 Saved Search (Alt+Q) Deepti Kanneganti											
File Home Insert Page Layout Formulas Data Review View Developer Help ACROBAT											
O2											
Measure Crosswalk											
	BV Library #	Measure Name	NQF #	NQF Endorsement Status as of February 2022	Steward	CMS Quality ID	CMS eCQM ID as of May 2021	Description	Domain	Condition	Measure Type
1	BV-81	Prenatal & Postpartum Care	1517	No Longer Endorsed	National Committee for Quality Assurance			Percentage of deliveries of live births between November 6 of the year prior to the measurement year and November 5 of the measurement year. For these women,	Prevention/Early Detection	Pregnancy	Process
2	BV-66	Substance Use Assessment in Primary Care	NA	NA	Inland Empire Health Plan			Percentage of members 18 years and older who were screened for substance use during the measurement year	Prevention/Early Detection	Substance Use Disorder	Process
3	BV-587	Child and Adolescent Well-Care Visits	NA	NA	National Committee for Quality Assurance			Percentage of members 3–21 years of age who had at least one comprehensive well-care visit with a PCP or an OB/GYN practitioner during the measurement year.	Prevention/Early Detection	NA	Process
4	BV-339	Comprehensive Diabetes Care: Hemoglobin A1c (HbA1c) Testing	0057	Endorsed	National Committee for Quality Assurance			Percentage of members 18-75 years of age with diabetes (type 1 and type 2) who received an HbA1c test during the measurement year	Chronic Illness Care	Diabetes	Process
5	BV-822	Well-Child Visits in the First 30 Months of Life	NA	NA	National Committee for Quality Assurance			Percentage of members who had the following number of well-child visits with a PCP during the last 15 months. The following rates are reported:	Prevention/Early Detection	NA	Process
6	BV-423	Asthma Medication Ratio	1800	Endorsed	National Committee for Quality Assurance			Percentage of patients 5–64 years of age who were identified as having persistent asthma and had a ratio of controller medications to total asthma medications of	Medication Management	Respiratory	Process
7											
8											
9											
Summary Sheet Measure Crosswalk Links to Source Documents											

# The Buying Value Benchmark Repository

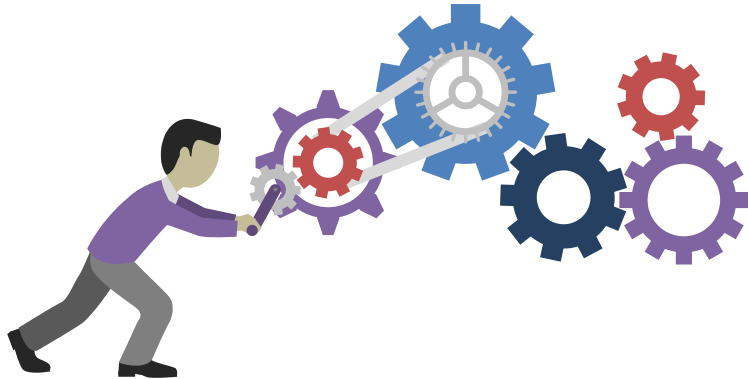


States have had difficulty **finding measures that address their program priorities** and implementing non-HEDIS measures into value-based arrangements due to the **lack of national benchmarks** against which to assess performance.



A **spreadsheet repository** that includes **innovative homegrown measures** as well as state and regional health improvement collaborative **performance on non-HEDIS measures.**

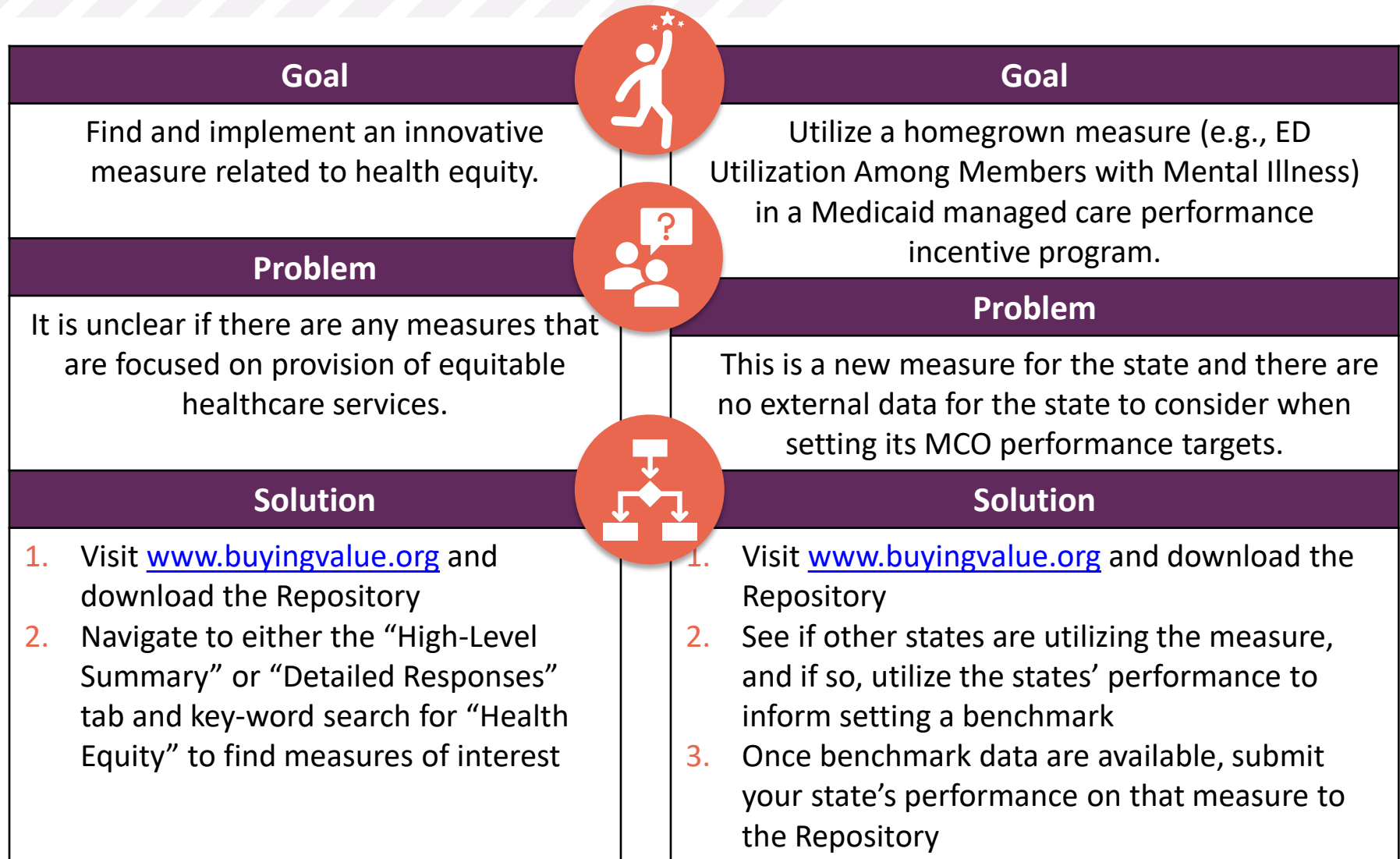
# The Buying Value Measure Selection Tool



## Key Features

- Information on nearly 60 measures in use by other states and performance data (when available), including:
  - Innovative homegrown measures
  - Non-HEDIS measures that are *not* homegrown and for which benchmark data are not otherwise available

# Case Example: Reasons to Use the Repository



# Buying Value Benchmark Repository Tutorial

AutoSave Off Buying-Value-Benchmark-Repository-External-2021-6-17 Search (Alt+Q) Deepti Kanneganti										
File Home Insert Page Layout Formulas Data Review View Developer Help ACROBAT										
N2										
A B C D E F G H I J										
1	Buying Value Benchmark Repository - High-Level Summary									
2										
3	#	Submitting Organization	Measure Name	NQF Number	Condition	Deviations from Measure Steward	Coverage Type	Performance Level Reported to the Repository	Availability of Performance Data	Performance Period 1 Start Date
16	13	Oregon Health Authority Health Analytics	Comprehensive Diabetes Care: HbA1c Poor Control	0059	Diabetes	Measure does deviate from the steward (eCQM specs call for all-payer data; OHA prefers, but doesn't require, Medicaid only data.)	Medicaid	State	Performance data are available.	01/01/2019
17	14	MN Community Measurement	Optimal Asthma Control - Adults	No NQF Number	Respiratory	No deviations from the measure steward (2018 report year (2017 dates of service))	Medicaid, Medicare, Commercial, Dual Medicaid/ Medicare, Other	State	Performance data are available.	01/01/2018
18	15	MN Community Measurement	Optimal Asthma Control - Children	No NQF Number	Respiratory	No deviations from the measure steward (2019 report year (2018 dates of service))	Medicaid, Medicare, Commercial, Dual Medicaid/ Medicare, Other	State	Performance data are available.	01/01/2018
19	16	Integrated Healthcare Association	Concurrent Use of Opioids and Benzodiazepines	3389	Substance Abuse	Measure does deviate from the steward (Modified PQA measure so value sets are in alignment with HEDIS digital measure formatting)	Medicaid, Medicare, Commercial	Aggregated rate for providers (e.g., primary care practices, hospitals)	Performance data are available.	01/01/2018
20	17	MassHealth Office of Clinical Affairs	Community Tenure	No NQF Number	Mental Health	Not applicable - measure is homegrown	Medicaid	TBD	Data are expected to be available by: TBD - measure results anticipated in late 2021.	Performance data are not available at this time.
21	18	MassHealth Office of Clinical Affairs	Emergency Department Visits for Adults with Mental Illness and/or Substance Addiction	No NQF Number	Mental Health, Substance Abuse	Not applicable - measure is homegrown	Medicaid	TBD	Data are expected to be available by: TBD - measure results anticipated in late 2021.	Performance data are not available at this time.
High-Level Summary Detailed Responses										

# Questions?





# Thank You

**Mary Beth Dyer**  
Senior Managing Director  
Bailit Health  
[mbdyer-Bailit-health.com](mailto:mbdyer-Bailit-health.com)

**Grace Flaherty**  
Consultant  
Bailit Health  
[gflaherty@bailit-health.com](mailto:gflaherty@bailit-health.com)