

THE IMPORTANCE OF CHOICES

5TH ANNUAL PASRR CONFERENCE

Luke Reynard, MBA

Chief Operating Officer, Northeastern Family Institute(NFI North)

Operations Consultant, Center for START Services, University of New
Hampshire

WHO AM I AND WHY AM I HERE?

- Service Coordinator for MHMR Tarrant
- Director for Tarrant START Program
- Chief of Disability Services
- Director of Operations for the Center for START Services
- Chief Operating Officer for Northeastern Family Institute

THE IMPORTANCE OF CHOICES

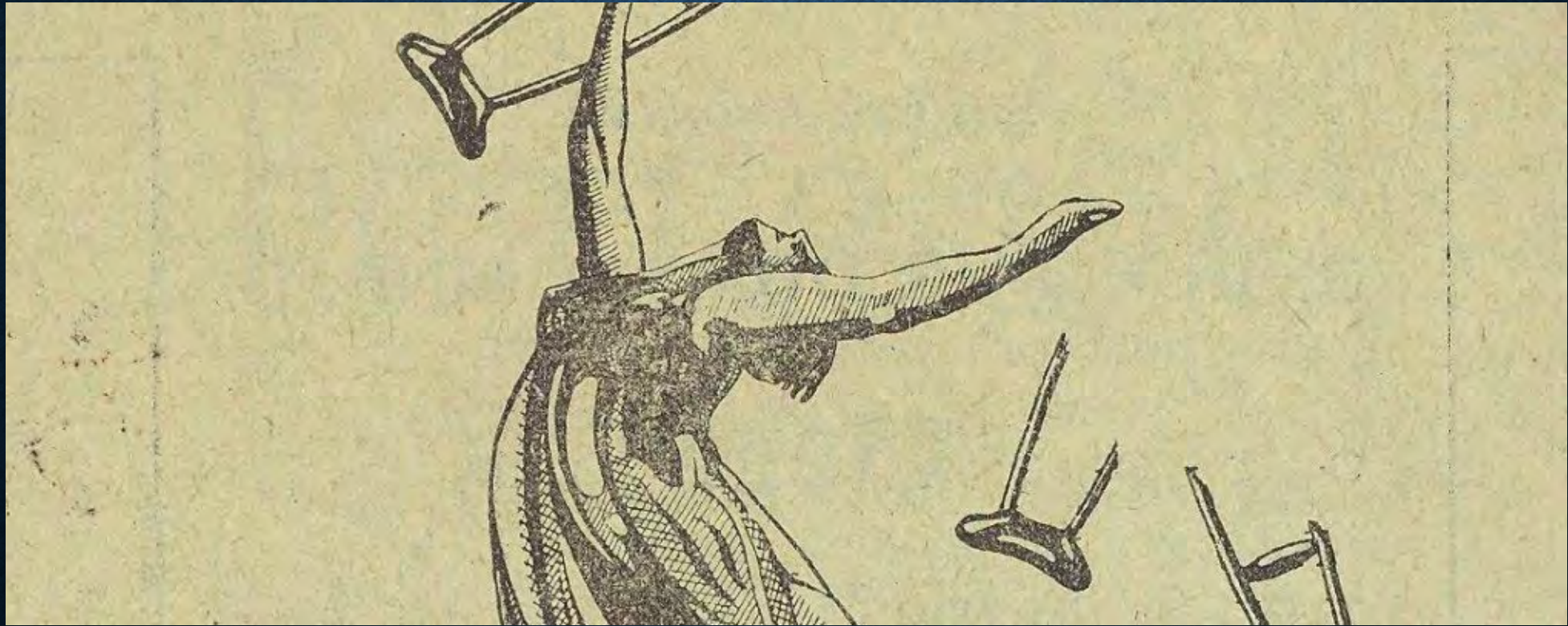


Choice – image: alphaspirit via shutterstock

WHAT SHOULD WE TALK ABOUT

- History of the Mental Health and Disability Landscape
- The Unique Opportunity of PASRR
- The world of today and tomorrow: Mental Health and IDD
- PASRR in Texas
- Looking Forward
- Questions

HISTORY OF DISABILITY



<https://disabilityhistorylectureseries.wordpress.com/>

HISTORY OF DISABILITY

- Greeks and Romans:
 - Obsession with Perfection & Beauty
 - People with disabilities considered inferior



Roman Colosseum (Modern-Day)

HISTORY OF DISABILITY



<https://www.britannica.com/topic/The-Fall-of-the-Roman-Empire>

- Fall of the Roman Empire
- Rise of Christianity

HISTORY OF DISABILITY

- Middle Ages:
 - Punishment from God
 - Closer to God



<https://www.medievalists.net/2018/12/in-the-resurrection-no-weakness-will-remain-perceptions-of-disability-in-christian-anglo-saxon-england/>

HISTORY OF DISABILITY



- Renaissance:
 - Medical Care
 - First Psychiatric Hospital Established

HISTORY OF DISABILITY

Industrial Revolution



William James Bennett, *View of South Street, from Maiden Lane, New York City*, c. 1827, via [Metropolitan Museum of New York](#)

HISTORY OF DISABILITY



Dorothea Dix and the Rise of the Institutions

<https://www.womenshistory.org/education-resources/biographies/dorothea-dix>

HISTORY OF DISABILITY

- Notable 20th Century Events:
- 1907 Immigration Act
- Eugenics Movement
- 1946 The National Mental Health Foundation Established
- 1964 Civil Rights Act

HISTORY OF DISABILITY

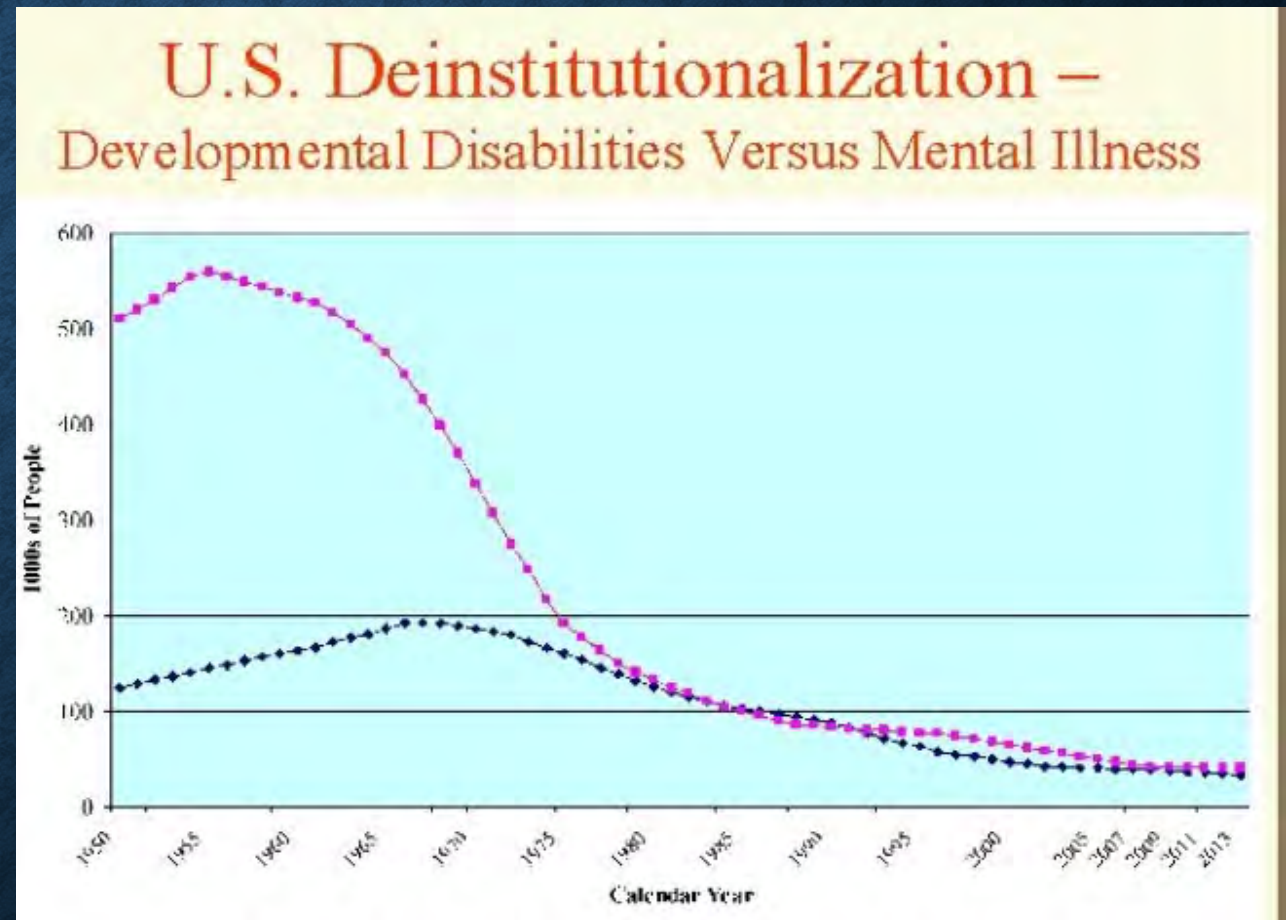
Notable 20th Century Events:

- 1973 Rehabilitation Act
- 1975 IDEA
- 1979 NAMI is founded in Wisconsin
- Omnibus Budget Reconciliation Act of 1987(OBRA)
- 1990 Americans with Disabilities Act
- 1999 Olmstead Act

HISTORY OF DISABILITY

20th Century

The century of change





https://www.youtube.com/watch?v=xPrH_1C0dA

THE ORIGINS OF PASRR

1987 Omnibus Budget
Reconciliation Act or
OBRA



THE IMPORTANCE OF PASRR



LRE

What does the
Least Restrictive
Environment mean?

WHO BENEFITS FROM PASRR

PASRR eligible:

- People with Serious Mental Illness(SMI)
- People with Intellectual and Developmental Disabilities(IDD) or a Related Condition(RC)



THE UNIQUE PASRR OPPORTUNITY



<https://www.johnmaxwell.com/blog/when-opportunity-knocks/>

THE INTERSECTION OF IDD AND MH

- Across the United States approximately 2.5% of the population has an intellectual developmental disorder (IDD).
- The DSM5 defines IDD as a disability that involves impairments of general mental abilities that impact adaptive functioning in three domains, or areas.
- These domains determine how well an individual copes with everyday tasks.

THE INTERSECTION OF IDD AND MH

- Epidemiological studies have established that the incidence and prevalence of mental health conditions for people with IDD is typically 2 to 3 times that of the general population
- These mental health conditions often contribute to challenging behavior. For people with IDD, aggression and self-injurious behavior are two of the most common reasons for referrals for mental health services.

THE INTERSECTION OF IDD AND MH

People with IDD experience numerous health disparities, including higher rates of mental health symptoms and behavioral challenges, compared to their typically developing peers.

THE INTERSECTION OF IDD AND MH

This gap has translated into use of costly and ineffective care, resulting in frequent emergency department and psychiatric hospital visits poorer quality of life, and earlier age of mortality for individuals with IDD.

THE INTERSECTION OF IDD AND MH MENTAL HEALTH SYSTEM BARRIERS

- Stigma
- Much more likely to use emergency services
- Lack of training (diagnostic overshadowing)
- Lack of expertise
- Medication issues
- Believed that challenging behavior was a result of developmental issues alone
- “Did not have the IQ for depression”

THE INTERSECTION OF IDD AND MH

Estimated 26% of Americans is impacted by a diagnosable mental illness in any given year. Up to 2% of those people may have an intellectual disability as well.

Nearly half of all adults will experience a mental health issue in their lives

Many people suffer with more than 1 mental health issue

Only 40% will receive any kind of treatment

<https://www.mentalhealthfirstaid.org/2019/02/5-surprising-mental-health-statistics/>

Morgan VA, Leonard H, Bourke J, Jablensky A. Intellectual disability co-occurring with schizophrenia and other psychiatric illness: population-based study. Br J Psychiatry. 2008 Nov;193(5):364-72. doi:

PASRR IN TEXAS



PASRR IN TEXAS

Just in FY 2021:

147 Nursing Facility slots released

265 Nursing Facility Diversion slots released

22,817 Specialized Services authorizations processed

200 People trained in PASRR related courses

600 People trained in Person Centered Outcomes

PASRR IN TEXAS

Habilitation Coordination

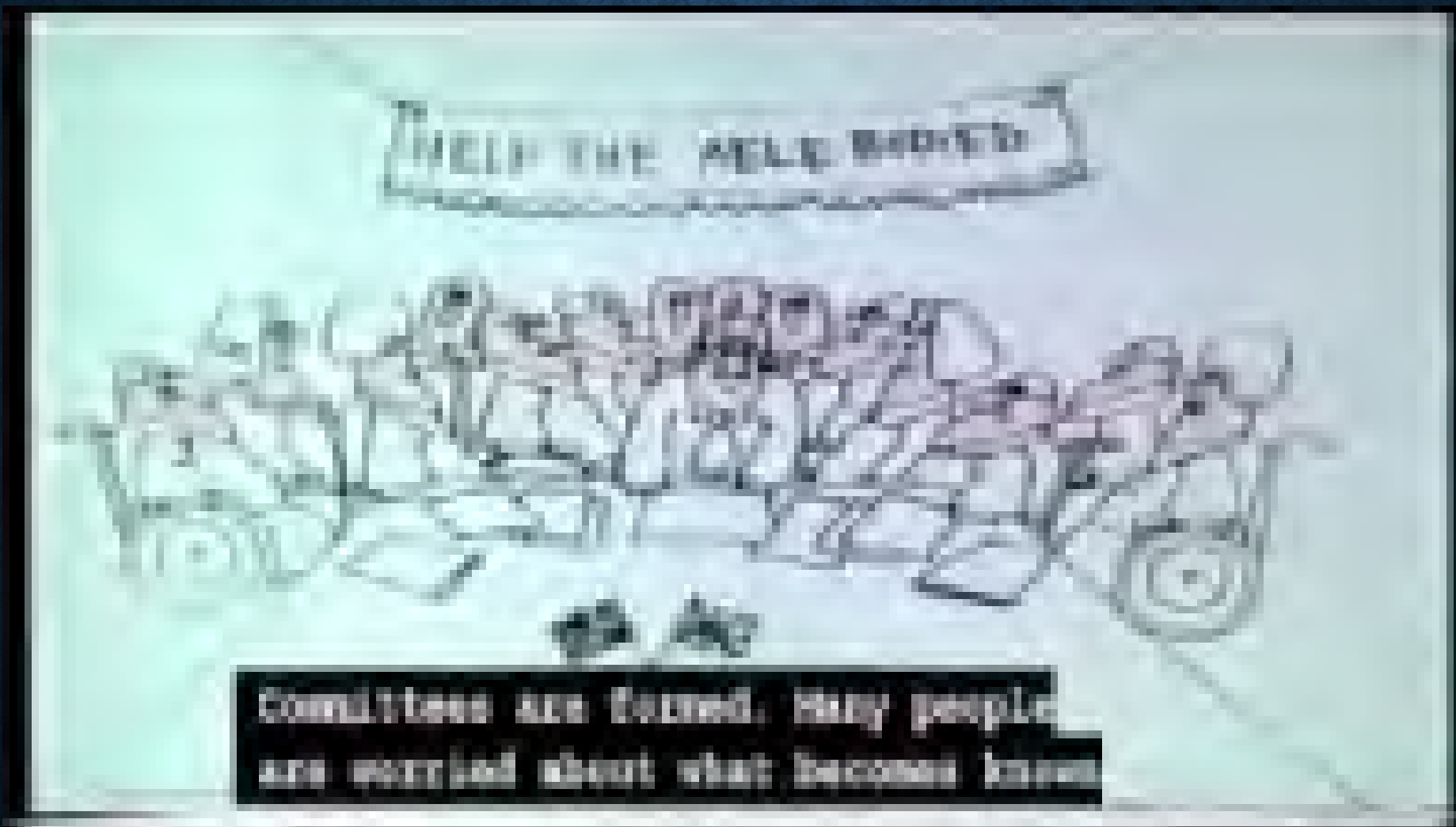
State Plan Amendments:

IHSS funding through Medicaid:

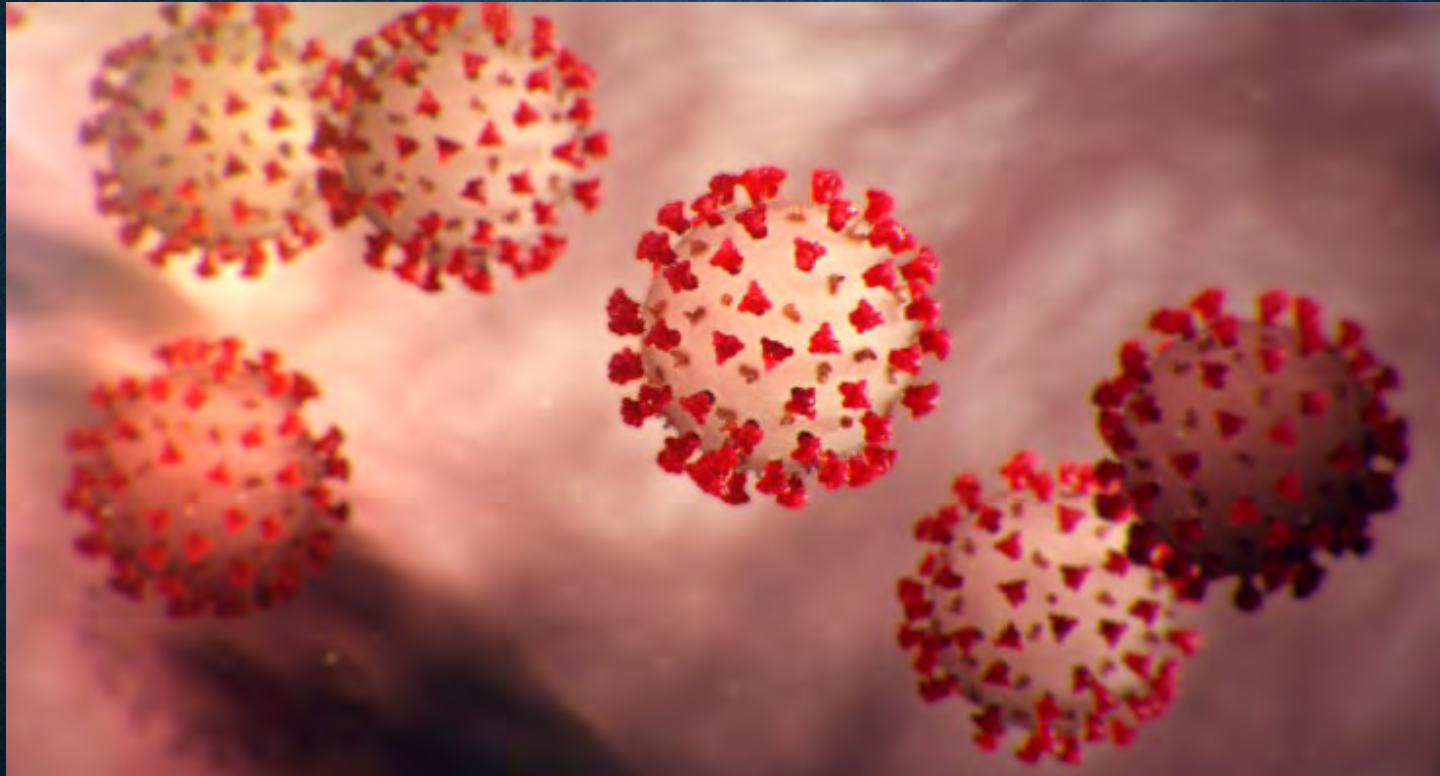
Expanded Providers for community based services

TMHP Long Term Care Portal updates

IT updates are coming to the PL1 and PASRR Evaluation forms



LOOKING FORWARD



<https://www.cdc.gov/media/dpk/diseases-and-conditions/coronavirus/coronavirus-2020.html>

LOOKING FORWARD

Pandemic impacts:

Increased anxiety/depression

Increased trauma and stress

Increased substance use

Increase suicidal ideation

Delayed access to supports



<https://www.news-medical.net/news/20211019/Factors-impacting-mental-health-and-wellbeing-of-long-covid-patients.aspx>

LOOKING FORWARD

Increased awareness of the importance of mental health, especially with isolation, anxiety and depression.



<https://www.dianova.org/news/covid-19-and-mental-health/>

LOOKING FORWARD

Recognition of our front-line
healthcare workers

Direct Care Staff

Nursing Home staff

Medical and Nursing

Emergency Workers

Teachers



<https://www.chieflearningofficer.com/2020/10/12/to-overcome-business-disruption-take-a-front-line-first-approach/>

LOOKING FORWARD

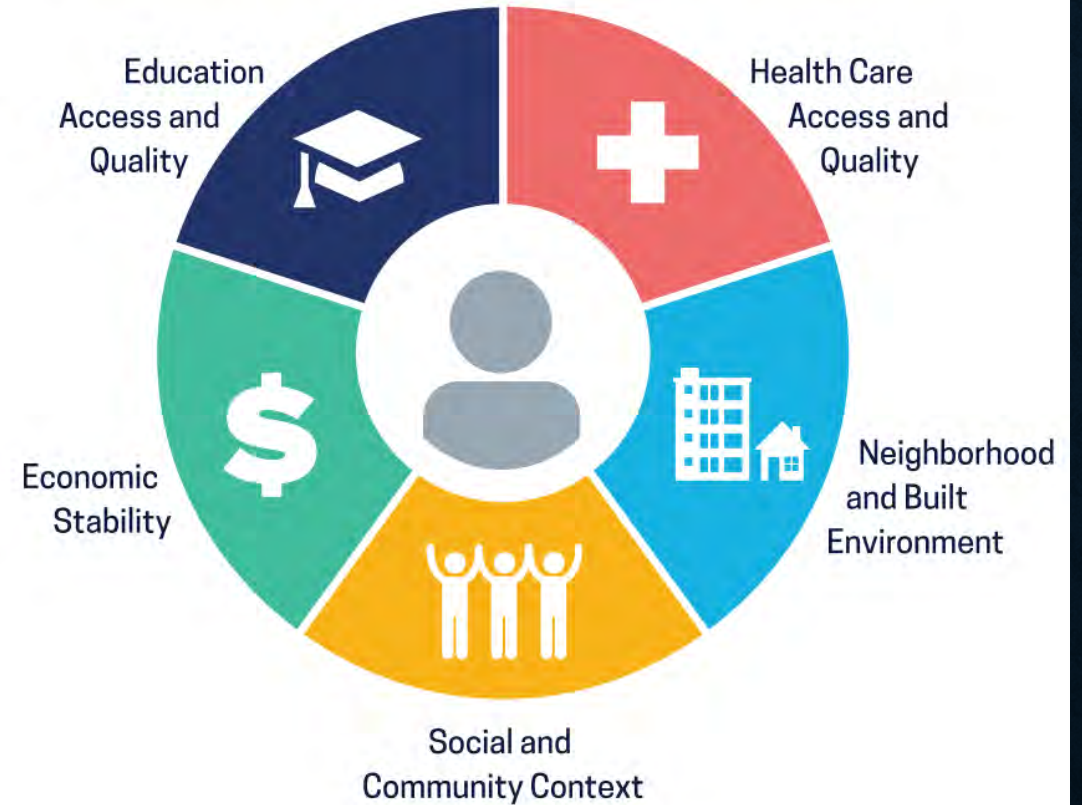
- Opportunities:
- Infrastructure Bill
- HCBS Support
- American Rescue Plan Act of 2021
 - Increased FMAP opportunities
 - Supplement services



LOOKING FORWARD

Social Determinants of Health & Build Back Better Framework

Social Determinants of Health



THE IMPORTANCE OF CHOICE



<https://www.playbytherules.net.au/got-an-issue/inclusion-and-diversity/inclusion-and-diversity-what-can-you-do/choice>

WHERE DO WE GO NOW



Source: World Bank

THE IMPORTANCE OF CHOICE

2021

"If the plan doesn't work, change the plan, but never the goal."
— Author Unknown

Q AND A



REFERENCES

- Disability History Exhibit web site: “response to disability: Abandonment, Exposure, Mutilation.” (Alaskan D.H. & S.S. 2011)
- Alaskan Department Health and Social Services, Disability History Exhibit: “Moral Viewpoint
- <https://www.psychiatry.org/patients-families/intellectual-disability/what-is-intellectual-disability>
- Borthwick-Duffy, S. Epidemiology and prevalence of psychopathology in people with mental retardation. *J Consult Clin Psychol*. 1994;62(1): 17-27.
- <https://www.mentalhealthfirstaid.org/2019/02/5-surprising-mental-health-statistics/>
- Healthy People 2030, U.S. Department of Health and Human Services, Office of Disease Prevention and Health Promotion. Retrieved [date graphic was accessed], from <https://health.gov/healthypeople/objectives-and-data/social-determinants-health>

REFERENCES

- Cooper SA, Smiley E, Morrison J. Mental ill-health in adults with intellectual disabilities: Prevalence and associated factors. *Br J Psychiatry*. 2007;190:27-35.
- Krahn GL, Hammond L, Turner A. A cascade of disparities: Health and health care access for people with intellectual disabilities. *Dev Disabil Res Rev*. 2006;12(1):70-82.
- Weiss JA, Wingsiong A, & Lunskey Y. Defining crisis in families of individuals with autism spectrum disorders. *Autism*. 2014; 18(8):985-995.
- Lunskey Y, Lin E, Balogh R, Klein-Geltink J, Wilton AS, & Kurdyak P. Emergency department visits and use of outpatient physician services by adults with developmental disability and psychiatric disorder. *Can J Psychiatry*. 2012;57(10):601-607.
- Lunskey, Y, Paquette-Smith, M, Weiss, JA, & Lee, J. Predictors of emergency service use in adolescents and adults with autism spectrum disorder living with family. *J Emerg Med*. 2014;32(10):787-792.
- Kalb LG, Stuart EA, & Vasa RA. Characteristics of psychiatric emergency department use among privately insured adolescents with autism spectrum disorder. *Autism*. 2019;23(3):566-573.

REFERENCES

- Kalb, LG, Stuart, EA, Freedman B, Zablotzky B, & Vasa R. Psychiatric-related emergency department visits among children with an autism spectrum disorder. *Pediatr Emerg Care*. 2012;28(12):1269-1276.
- Sipos A, Harrison G, Gunnell D, Amin S, & Singh SP. Patterns and predictors of hospitalisation in first-episode psychosis: Prospective cohort study. *Br J Psychiatry*. 2001;178(6):518-523.
- Wharff EA, Ginnis KB, Ross AM, Blood EA. Predictors of psychiatric boarding in the pediatric emergency department: Implications for emergency care. *Pediatr Emerg Care*, 2011; 27(6):483-489.
- Jewett C. Nowhere to go: Young people with severe autism languish weeks or longer in hospitals. *The Washington Post*. September 23, 2017.
- <https://acl.gov/news-and-events/acl-blog/acl-policy-update-american-rescue-plans-additional-funding-medicare-hcbs>
- <https://health.gov/healthypeople/objectives-and-data/social-determinants-health>
- Center for START Services