



Presentation to the House Appropriations Committee – Mental Health Facility Updates

**Michelle Alletto,
Chief Program and
Services Officer**

February 18, 2025



TEXAS
Health and Human
Services

88(R) Senate Bill 30 Funding Overview

- Texas Behavioral Health Center – \$101.89M
- Panhandle State Hospital – \$159M
- Lubbock Psychiatric Center – \$121M
- San Antonio State Hospital Alamo Unit – \$15M
- Rio Grande State Center – \$120M
- Terrell State Hospital – \$573M
- North Texas State Hospital – Wichita Falls – \$452M
- El Paso Psychiatric Center – \$50M
- Baptist Beaumont Hospital – \$64M
- Victoria County – \$40M
- Montgomery County – \$50M
- Rio Grande Hospital – \$85M
- Deferred Maintenance – \$50M
- Emergency Repairs – \$14M
- Sunrise Canyon Hospital – \$45M
- Uvalde Behavioral Health Campus – \$33.6M
- Community Grants – \$100M
- Children Inpatient Grants – \$15.8M



State Hospitals & Inpatient Mental Health Construction Projects

- Current state hospitals
- ★ New facility projects
- ★ Expansion and renovation projects

** Rebuilding existing hospital*

*** Expanding capacity*

¹ Owned by HHSC and operated by an academic partner

² Community mental health hospital



Projected Openings

Late 2025

- Texas Behavioral Health Center – Adult wing

Early-Mid 2026

- Texas Behavioral Health Center – Pediatric wing
- SASH Alamo Unit
- Sunrise Canyon expansion
- Rio Grande Valley Hospital – Doctors Hospital

Mid-Late 2027

- New Panhandle State Hospital
- New Lubbock Psychiatric Center
- North Texas State Hospital – Wichita Falls replacement
- Terrell State Hospital replacement
- Rio Grande State Center expansion
- Montgomery County

Mid-Late 2029

- Beaumont Baptist

TBD

- El Paso Psychiatric Center
- Victoria County
- Uvalde



HHSC-Owned State Hospital Capacity

	Pre-Construction Capacity	Post-Construction Capacity
Austin SH	263	240
Big Spring SH	144	144
El Paso PC	71	121
John S. Dunn BSC	-	168
Kerrville SH	220	290
Lubbock PC	-	50
NTSH Wichita Falls	268	225
NTSH Vernon South	32	32
NTSH Vernon	262	262
Panhandle SH	-	75
Rio Grande SC	55	105
Rusk SH	288	288
San Antonio SH	262	340
Terrell SH	305	275
Texas BHC	-	292
Waco CY	74	74
TOTAL	2,244	2,981



Partner-Owned, Contracted Capacity

	Previous Capacity	Future Capacity*
Baptist Beaumont	-	72
DHR (Rio Grande)	-	100
Montgomery County	94	194
Palestine	20	20
Sunrise Canyon	30	60
UTHealth Northeast-Tyler	44	88
Victoria County	-	60
TOTAL	188	594

*DHR, Montgomery County, and Victoria County language in 88(R) SB 30 states “up to” number, meaning less beds may be constructed than the maximum noted above.

In fiscal year 2025 HHSC is:

- Contracting for an additional 724 CMHH/PPBs.
- Contracting for an additional 129 competency restoration beds.
- Nearing execution on two contracts that will bring an additional 37 competency restoration beds.



HHSC-Operated State Hospital Beds Online

	Total FY 25 Capacity	February 2025 Beds Online
Austin SH	240	192
Big Spring SH	144	144
El Paso PC	71	71
Kerrville SH	290	250
NTSH Wichita Falls	268	268
NTSH Vernon South	32	25
NTSH Vernon	262	217
Rio Grande SC	55	55
Rusk SH	288	265
San Antonio SH	300	268
Terrell SH	305	212
Waco CY	74	74
TOTAL	2,329	2,041

In February 2025, there are 288 beds offline:

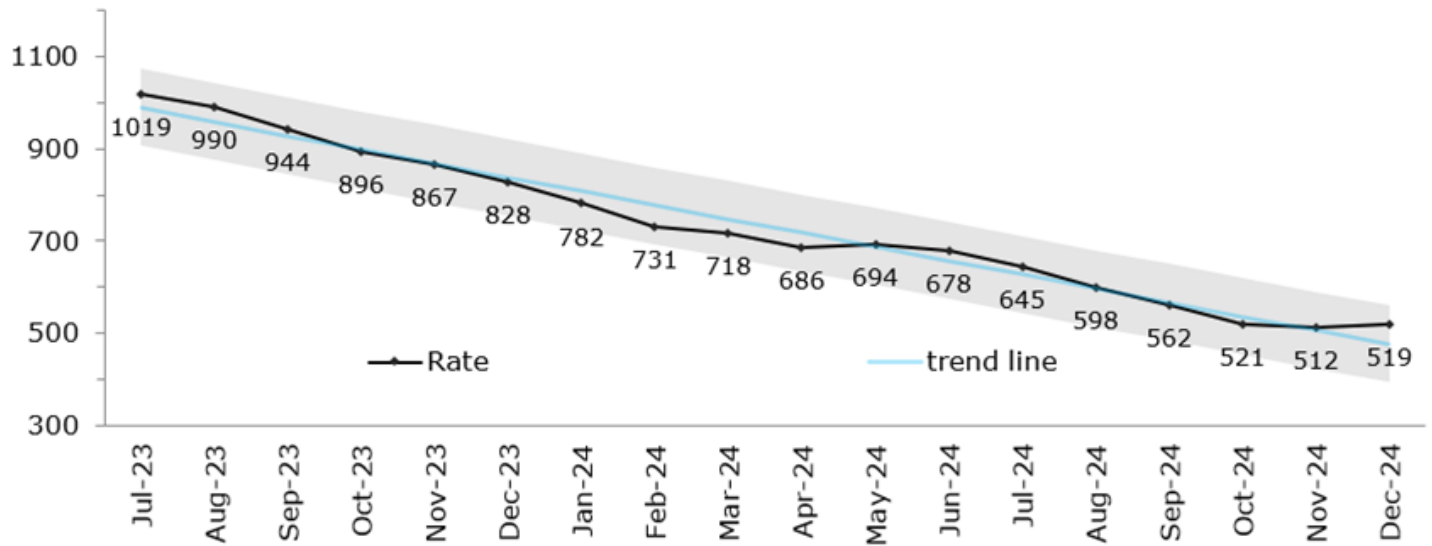
- 52 beds are offline due to construction/deferred maintenance.
- 236 beds are offline due to staffing.



Maximum-Security Unit (MSU) Waitlist

In December 2024, an average of 519 people were waiting for an MSU bed.

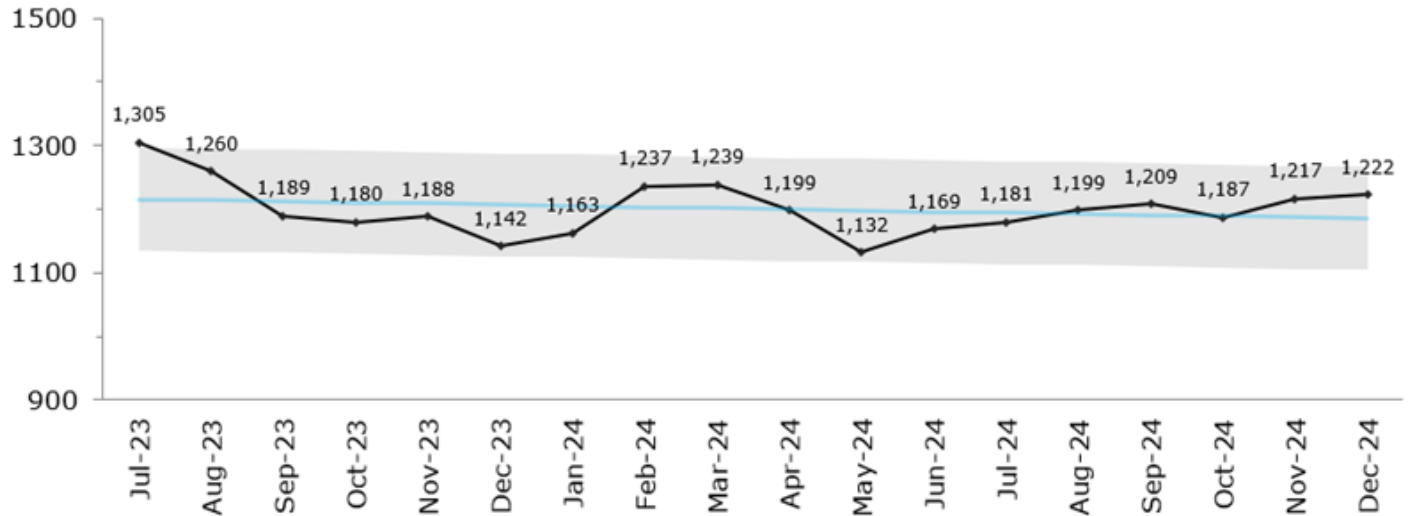
MSU - Number on Waitlist - Total



Non-Maximum-Security Unit (Non-MSU) Waitlist

In December 2024, an average of 1,222 people were waiting for a non-MSU bed.

Non-MSU - Number on Waitlist - Total





Appendix



TEXAS
Health and Human
Services

Texas Behavioral Health Center at UTSW – *Adult Wing*

Scope: New hospital – 200 non-MSU adult beds (125 civil, 75 forensic)

Budget: \$384.4 million

Estimated Timeline: Construction completion July 2025

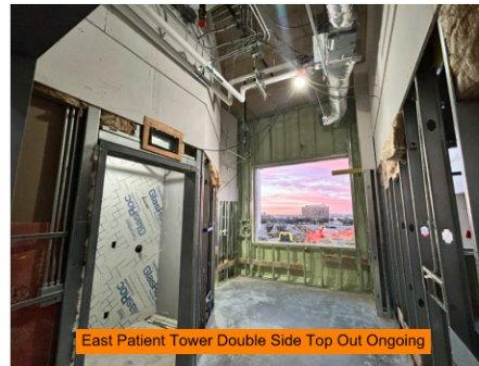
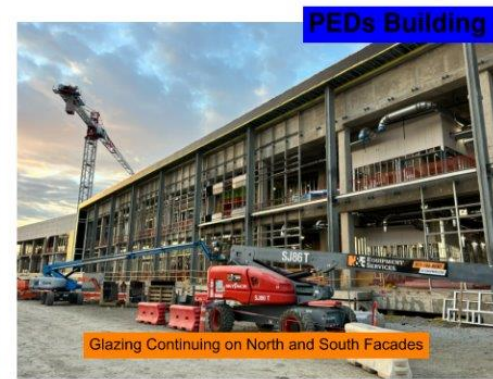
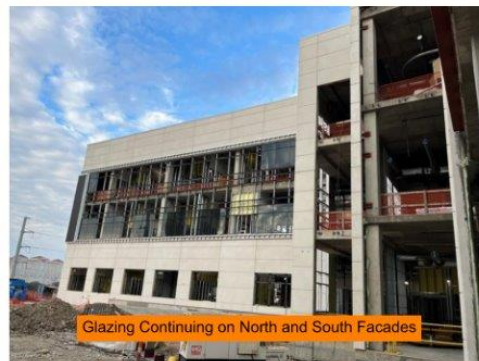


Texas Behavioral Health Center at UTSW – *Pediatric Wing*

Scope: New hospital – 92 pediatric beds

Budget: \$261 million (donation by Children’s Health)

Estimated Timeline: Construction completion April 2026



TEXAS
Health and Human
Services

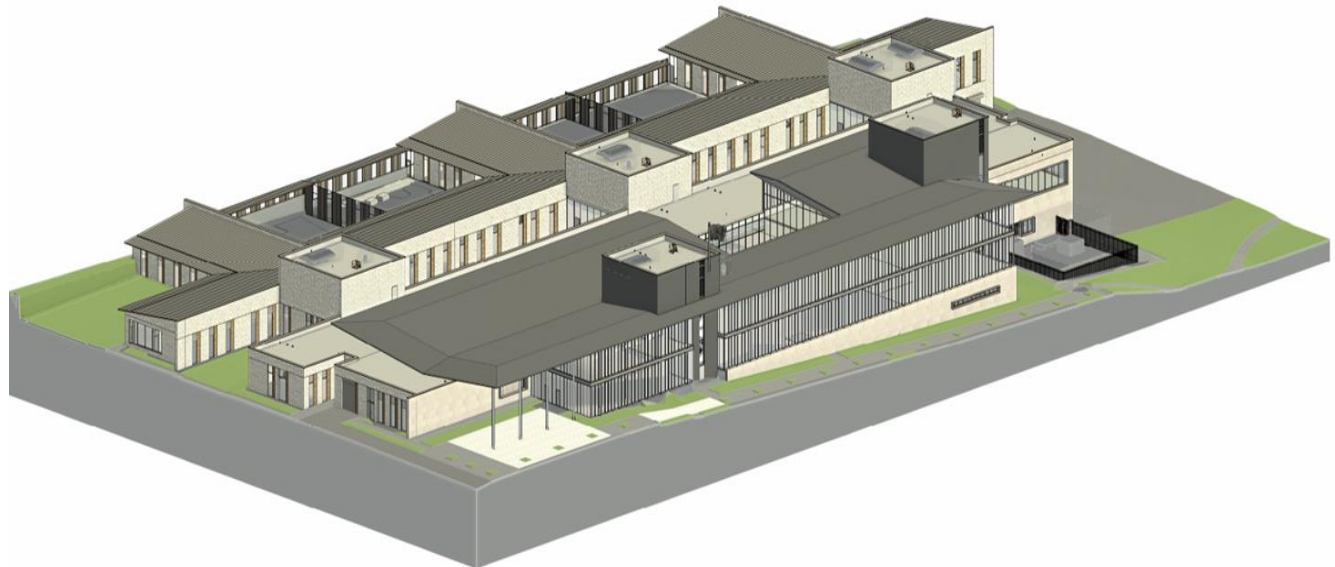
Panhandle State Hospital – Amarillo

Scope: New hospital – 75 adult non-MSU beds (50 forensic, 25 civil)

Budget: \$159 million

Estimated Timeline:

- Groundbreaking ceremony: June 10, 2025
- Construction: February 2025 – April 2027



Lubbock Psychiatric Center

Scope: New hospital – 50 MSU beds

Budget: \$128.5 million

Estimated Timeline:

- Construction: March 2025 – February 2027



North Texas State Hospital – Wichita Falls Campus

Scope: Rebuild – 225 beds
(25 youth, 25 MSU, 175 non-MSU adult)

Budget: \$452 million

Estimated Timeline:

- Construction: October 2024 – June 2027



TEXAS
Health and Human
Services

Terrell State Hospital

Scope: Rebuild – 275 beds (50 youth, 50 MSU, 175 non-MSU adult)

Budget: \$573 million

Estimated Timeline:

- Construction: September 2024 – June 2027



Rio Grande State Center

Scope: Expansion – 50 MSU beds

Budget: \$120 million

Estimated Timeline:

- Construction: April 2025 – March 2027



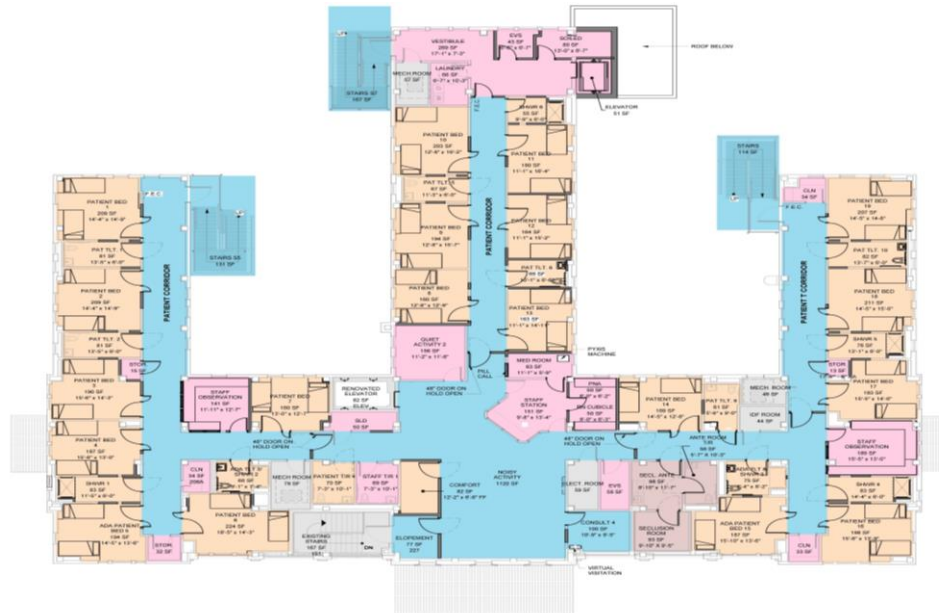
San Antonio State Hospital – Alamo Unit

Scope: Expansion/conversion – 40 geriatric MSU beds

Budget: \$15 million

Estimated Timeline:

- Construction: May 2025 – May 2026



El Paso Psychiatric Center

Scope: 50 non-MSU beds

Budget: \$50 million (land acquisition, pre-planning, planning, and initial construction)

Estimated Timeline:

- Construction: TBD pending additional appropriations



Sunrise Canyon Hospital

Scope: Expansion – 30 non-MSU beds

Budget: \$60 million

Estimated Timeline:

- Construction: March 2024 – December 2025
- Move-in: January 2026



Mental Health Inpatient Facility Grant Program

Baptist Beaumont Hospital

- **Scope:** Expansion – 72 beds
- **Award:** \$64 million
- **Term:** June 9, 2023, to August 31, 2028
- **Status:** Contract executed August 22, 2024
- **Estimated construction completion:** June 2029

Rio Grande Valley (Doctors Hospital Renaissance)

- **Scope:** New hospital – up to 100 beds
- **Award:** \$85 million
- **Term:** June 9, 2023, to August 31, 2028
- **Status:** Contract executed August 22, 2024
- **Estimated construction completion:** August 2026



Mental Health Inpatient Facility Grant Program

Montgomery County Mental Health Facility

- **Scope:** Expansion – up to 100 beds
- **Award:** \$50 million
- **Term:** June 9, 2023, to August 31, 2028
- **Status:** Contract executed September 5, 2024
- **Estimated construction completion:** February 2027

Victoria County

- **Scope:** New hospital – up to 60 beds
- **Award:** \$40 million
- **Term:** June 9, 2023, to August 31, 2028
- **Status:** Finalizing contract
- **Estimated construction completion:** TBD



Community Mental Health Grant

- **\$100 million for one-time grants to construct:**
 - Jail Diversion Facilities
 - Step-Down Facilities
 - Permanent Supportive Housing
 - Crisis Stabilization Units
 - Crisis Respite Units
- **Requires local match.**
- **Estimated Award:**
 - Phase 1 – March 2025
 - Phase 2 – August 2025



Children's Hospitals Construction Grant Program

- **\$15.8 million for one-time grants to construct inpatient mental health beds for children.**
- **Requires local match.**
- **Projects Funded:**
 - \$2 million awarded to Clarity Child Guidance Center.
 - \$4.1 million awarded to Covenant Methodist.
- **Next Steps:**
 - Remaining funds status – negotiating with two facilities.
 - April 2025 – estimated contract awards.





Thank You
hhsc_gr@hhs.texas.gov



TEXAS
Health and Human
Services