



TEXAS
Health and Human
Services

Office of Acquired Brain Injury

Rehabilitative & Independence Services

Cassandra Saucedo

Overview



TEXAS
Health and Human
Services

- OABI Mission
- Acquired Brain Injury
- Program Activities
- Questions

OABI Mission



TEXAS
Health and Human
Services

Office of Acquired Brain Injury (OABI) –
center for awareness and education on brain
injuries in Texas

- Connect people to resources and services
- Raise awareness on brain injuries
- Provide education to prevent brain injuries

Acquired Brain Injury



TEXAS
Health and Human
Services

Acquired brain injury – brain damage caused by something that happens after birth

- Traumatic brain injury – outside force (violent blow to the head)
- Non-traumatic brain injury – inside force (stroke, infection, lack of oxygen, brain tumors, exposure to toxins, or drug use)

Program Activities



TEXAS
Health and Human
Services

- Education, Outreach, and Awareness
- Training
- Resource Facilitation
- Collaboration and Networking
- Texas Brain Injury Advisory Council
- Connecting veterans to services

Education, Outreach, and Awareness



TEXAS
Health and Human
Services

Events

- Conferences and Health Fairs
- March Brain Injury Awareness Month
- Brain Injury Conference
- Virtual opportunities

Education, Outreach, and Awareness



TEXAS
Health and Human
Services

Educational Materials

- Brochure
- Poster
- Concussion Cards
- Stroke Card
- Fall Prevention Card
- Myths and Facts Card
- More to be developed!



Education, Outreach, and Awareness



TEXAS
Health and Human
Services

Educational Materials (Website)

<https://hhs.texas.gov/services/disability/acquired-brain-injury/materials-download-or-order>

Materials for Download or Order

Home / Services / Disability / Acquired Brain Injury / Materials for Download or Order

Español

The Office of Acquired Brain Injury develops educational materials you can download below. View the Spanish version of this page for Spanish language materials. You can also order these items for free through the HHSC Pinnacle web page.

Raise awareness in your community with these **free** materials about brain injury.

Order Today

- + Office of Acquired Brain Injury Brochure
- + Texas Brain Injury Resource Guide
- + Brain Injury Infographic Poster
- + Concussion Card
- + Stroke Card

Navigation menu: + Aging, - Disability, - Acquired Brain Injury, About OABI, Crucial First Steps, Educational Videos, Emergency Preparedness, Find a Support Group, Find Help through HHS, General Resources, Insurance, Materials for Download or Order, Prevention, Training.

English

The Office of Acquired Brain Injury develops educational materials you can download below. View the Spanish version of this page for Spanish language materials. You can also order these items for free through the HHSC Pinnacle web page.

Office of Acquired Brain Injury Brochure

The Office of Acquired Brain Injury develops educational materials you can download below. View the Spanish version of this page for Spanish language materials. You can also order these items for free through the HHSC Pinnacle web page.

English

La Oficina para Lesiones Cerebrales Adquiridas desarrolla materiales educativos que pueden descargarse en los enlaces que aparecen más abajo. Visite la versión en español de esta página web para obtener los materiales en español. También puede pedir sin costo alguno estos materiales a través de la página web Pinnacle de la HHSC.

Folleto de la Oficina para Lesiones Cerebrales Adquiridas

Este folleto es una guía práctica para conocer más sobre las lesiones cerebrales, cuáles son las funciones de la Oficina para Lesiones Cerebrales Adquiridas y dónde encontrar en Texas recursos relacionados con el tema.

- Folleto de la Oficina para Lesiones Cerebrales Adquiridas (PDF)

Education, Outreach, and Awareness



TEXAS
Health and Human
Services

Educational Materials (Pinnacle)

<https://hhsc.mypinnaclecart.com/brain-injury/>

The screenshot displays the 'BRAIN INJURY' category page on the Pinnacle e-commerce platform. The page layout includes a left-hand navigation menu with categories such as DSHS, HHSC, and various services. The main content area shows four educational materials for sale, each priced at \$0.00. The materials are:

- Brain Injury Infographic Poster (English) - Product ID: BI-17
- Brain Injury Infographic Poster (SPANISH) - Product ID: BI-17S
- Concussion Card for Adults and Children (Double sided in English/Spanish) - Product ID: BI-7
- Concussion Card for Athletes (Double sided in English/Spanish) - Product ID: BI-8

Each product listing includes a thumbnail image, the product title, product ID, price (\$0.00), and 'LOGIN' and 'REGISTER' buttons. The page also features a search bar, a 'MY CART' section indicating an empty cart, and a newsletter subscription form at the bottom left.

Education, Outreach, and Awareness



TEXAS
Health and Human
Services

Outreach Materials

- Notepads
- Pens
- Stress Ball
- Flashlight
- Tote bags



Education, Outreach, and Awareness



TEXAS
Health and Human
Services

Website

- Acquired Brain Injury
- About OABI
- Crucial First Steps
- Educational Videos
- Emergency Preparedness
- Find A Support Group
- Find Help Through HHS
- General Resources
- Insurance
- Materials for Download or Order
- Prevention
- Training
- Connecting veterans to services

Education, Outreach, and Awareness



TEXAS
Health and Human
Services

Website

<https://hhs.texas.gov/services/disability/acquired-brain-injury>

Acquired Brain Injury
Home / Servicios / Discapacidad / Acquired Brain Injury

Español

What is an Acquired Brain Injury?

What is Brain Injury

An acquired brain injury is brain damage caused by events after birth, rather than as part of a genetic or congenital disorder. These include strokes, brain illness and other brain injuries. They differ from degenerative brain conditions, such as Alzheimer's or Parkinson's disease.

Some of the effects a brain injury can have include:

- Cognitive effects, such as memory problems, difficulty concentrating, poor planning and judgment skills, language difficulties, and a lack of problem solving skills.
- Sensory effects, such as altered visual/spatial perception, altered sense of touch and hearing, or vision impairments.
- Emotional effects, such as being impulsive, risky behavior, depression/anxiety, aggression or paranoia.
- Physical effects, such as severe headaches, seizures, poor coordination and balance, slurred speech, and being unable to move.

Types of Acquired Brain Injury

How Common Are Brain Injuries?

Signs and Symptoms of Brain Injury

HHS has publications you can download to help you remember these signs and symptoms, or to share with others. You also can order printed materials.

To learn more, contact the Office of Acquired Brain Injury at 512-706-7181 or brain@hhs.texas.gov

Lesion cerebral adquirida
Home / Servicios / Discapacidad / Lesion cerebral adquirida

English

¿Qué es una lesión cerebral adquirida?

¿Qué es una lesión cerebral?

Una lesión cerebral adquirida es un daño al cerebro causado por sucesos ocurridos después del nacimiento, y no por un trastorno genético o congénito. Así, se consideran lesiones cerebrales los accidentes cerebrovasculares, las enfermedades cerebrales y otros daños ocurridos al cerebro. De estos padecimientos, ninguno pertenece al grupo de enfermedades cerebrales degenerativas, como el Alzheimer o el Parkinson.

Algunas de las secuelas de una lesión cerebral son las siguientes:

- Alteraciones cognitivas, como problemas de la memoria, dificultad para concentrarse, disminución de la capacidad de juicio y planeación, dificultades con el lenguaje y falta de habilidades para resolver problemas.
- Secuelas sensoriales, como alteraciones de la percepción visual y espacial, alteraciones del sentido del tacto y del oído, o problemas de la vista.
- Alteraciones emocionales, como el comportamiento impulsivo, las conductas de riesgo, la depresión o la ansiedad, la agresividad o la paranoia.
- Secuelas físicas, como dolores de cabeza intensos, convulsiones, falta de coordinación y del sentido del equilibrio, dificultad para hablar o no poder moverse.

Tipos de lesiones cerebrales adquiridas

¿Son frecuentes las lesiones cerebrales?

Signos y síntomas de una lesión cerebral

Training



TEXAS
Health and Human
Services

- In-person/webinar
- On-demand modules (in development)

Resource Facilitation



TEXAS
Health and Human
Services

- OABI phone line
- OABI mailbox
- Support Group Interactive Map
- Resource Guide

Resource Facilitation



TEXAS
Health and Human
Services

Support Group Interactive Map

<https://hhs.texas.gov/services/disability/acquired-brain-injury/find-a-support-group>

Find a Support Group

Home / Services / Disability / Acquired Brain Injury / Find a Support Group

- + Aging
- Disability
 - Acquired Brain Injury
 - About OABI
 - Crucial First Steps
 - Educational Videos
 - Emergency Preparedness
 - Find a Support Group**
 - Find Help through HHS
 - General Resources
 - Insurance
 - Materials for Download or Order
 - Prevention
 - Training
 - Veterans Recovery Pilot Program

Español

Brain injuries can make survivors, families and friends feel isolated, lonely and overwhelmed. Staying connected with your friends and family, creating a new community, or joining a support group can help prevent isolation and loneliness.

Support groups provide a safe space for people to gather where they can share their stories, have fun, and guide each other through difficult times. Many support groups host social events, bring in guest speakers, and are often led by people with a vast knowledge of brain injury. We encourage you to get connected and establish your community today.

Support group information provided here is frequently updated with new contact information and groups as we receive it. [Email the OABI](#) if you want to add a brain injury support group or update any information.

[Find a support group](#)

Note: The information provided might not be all inclusive of support groups in your area, and meeting information can change without our knowledge. We encourage you to reach out to the support group contact to get more information before attending meetings.

For assistance finding a support group near you, contact the Office of Acquired Brain Injury at 512-706-7191 or by [email](#).

Resource Facilitation



TEXAS
Health and Human
Services

Support Group Interactive Map

The screenshot shows the 'Brain Injury Support Group App' interface. At the top, there is a search bar with the text 'Find address or place' and a magnifying glass icon. Below the search bar is a map of Texas with several blue stars indicating support group locations. A white splash screen is overlaid on the map, containing the following text:

NOTE: Please read through these instructions once to get familiar with how the app works. Once you have read the instructions, you can click the box beside "Do not show this splash screen again", and you will not see these instructions on opening the app unless the instructions have changed.

Introduction:
This app shows locations for Brain Injury Support Group meetings. The blue stars indicate support group meetings. Clicking on a star will cause a pop-up window to appear with additional information about the selected support group.

Search Instructions:

1. In top right-hand corner in the 'Find address or place' box, type in your zip code. Click enter.
2. Click on a blue star in the area on the map in your zip code to find information about the support group including name, locations of meetings, times, and other details.
3. To email a support group contact, click on the email address.

If you have any questions or need help, please contact the Office of Acquired Brain Injury at nahi@hhsc.state.tx.us

Do not show this splash screen again.

OK

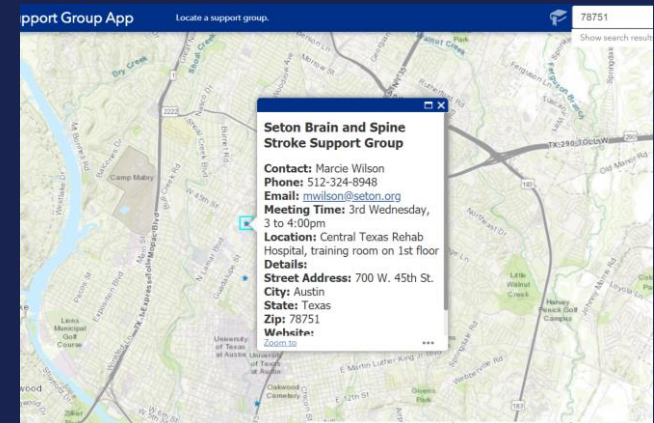
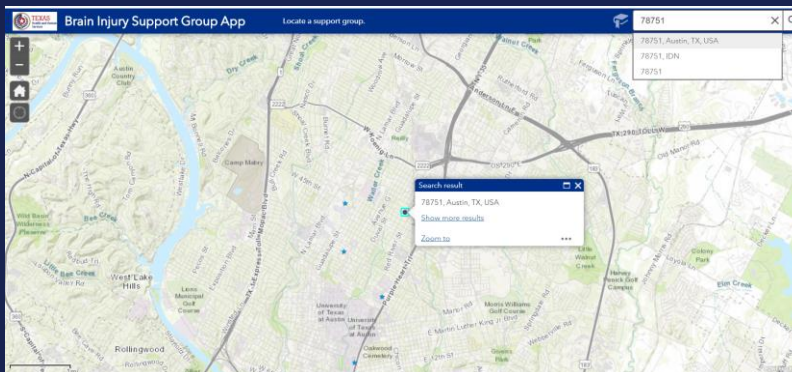
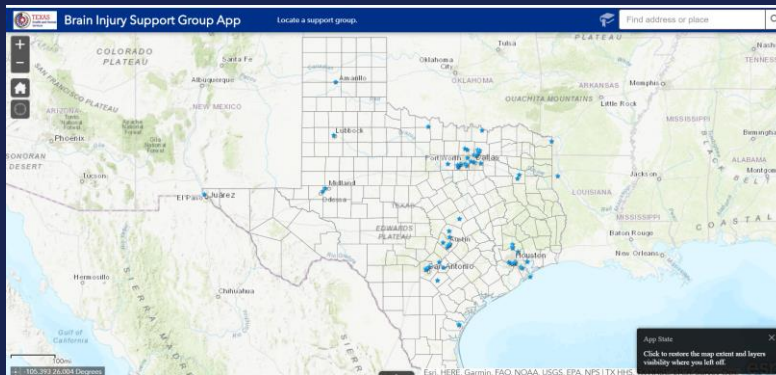
App State
Click to restore the map extent and layers visibility where you left off.

Resource Facilitation



TEXAS
Health and Human
Services

Support Group Interactive Map



Resource Facilitation



TEXAS
Health and Human
Services

Resource Guide

- Website
- Pinnacle

Texas Brain Injury Resource Guide

There are many services available to assist people living with a brain injury. Use this guide to find the support you need.



TEXAS
Health and Human
Services

Office of Acquired Brain Injury
Comprehensive Rehabilitation Services Program
Office of Disability Prevention for Children

Collaboration and Networking



TEXAS
Health and Human
Services

Develop partnerships

- Workgroups
- Initiatives
- Collaboratives
- Councils

Texas Brain Injury Advisory Council



TEXAS
Health and Human
Services

Liaison and Support for Council

- Addresses strategic planning, policy, rules and services related to preventing brain injury and providing rehabilitation and long-term services and supports
- Makes recommendations to OABI and HHS
- Brain injury survivors, family members and caregivers, and professionals
- Reducing risks, promoting prevention and using effective disease management to reduce the incidence and prevalence of brain injuries

Veteran Services



TEXAS
Health and Human
Services

There are several Veteran Service Organizations, with various foci.

- Designated state agency for veteran services: The Texas Veterans Commission
<https://tvc.texas.gov/>.
- MossRehab Institute for Brain Health (MRIBH), a Traumatic Brain Injury (TBI) medical outpatient program for Veterans and First Responders.



TEXAS
Health and Human
Services

Questions?



TEXAS
Health and Human
Services

Thank you

Office of Acquired Brain Injury

OABI@hhsc.state.tx.us

512-706-7191