



TEXAS
Health and Human
Services

Early Childhood Intervention

Child Find Self-Assessment (CFSA)



TEXAS
Health and Human
Services

Child Find

Child find is a continuous process of public awareness activities, screening, and evaluation designed to locate, identify, and evaluate children with disabilities who are in need of Early Childhood Intervention (ECI).





TEXAS
Health and Human
Services

Self-Assessment Tool

Developed by the Office of Special Education Programs as a voluntary tool to help states identify effective strategies and promote efficiency in their Part C child find systems.





TEXAS
Health and Human
Services

Opportunities Identified

- Increasing knowledge of ECI for those working in Child Protective Services (CPS).
- Increasing collaboration between ECI personnel and teachers who serve children who are deaf or hard of hearing or who have a visual impairment.
- Providing more information on typical child development and community resources to families.



TEXAS
Health and Human
Services

BUILD Initiative

The BUILD Initiative partners with state and community leaders across the country to promote equitable, high-quality child-and family-serving systems that result in young children thriving and learning.



Build
INITIATIVE

CFSA Workgroup



TEXAS
Health and Human
Services

- ECI Advisory Committee members
- State agency partners
- Education Service Centers/teachers
- Child care and preschool teachers
- Medical professionals
- Parents and caregivers

Current Activity



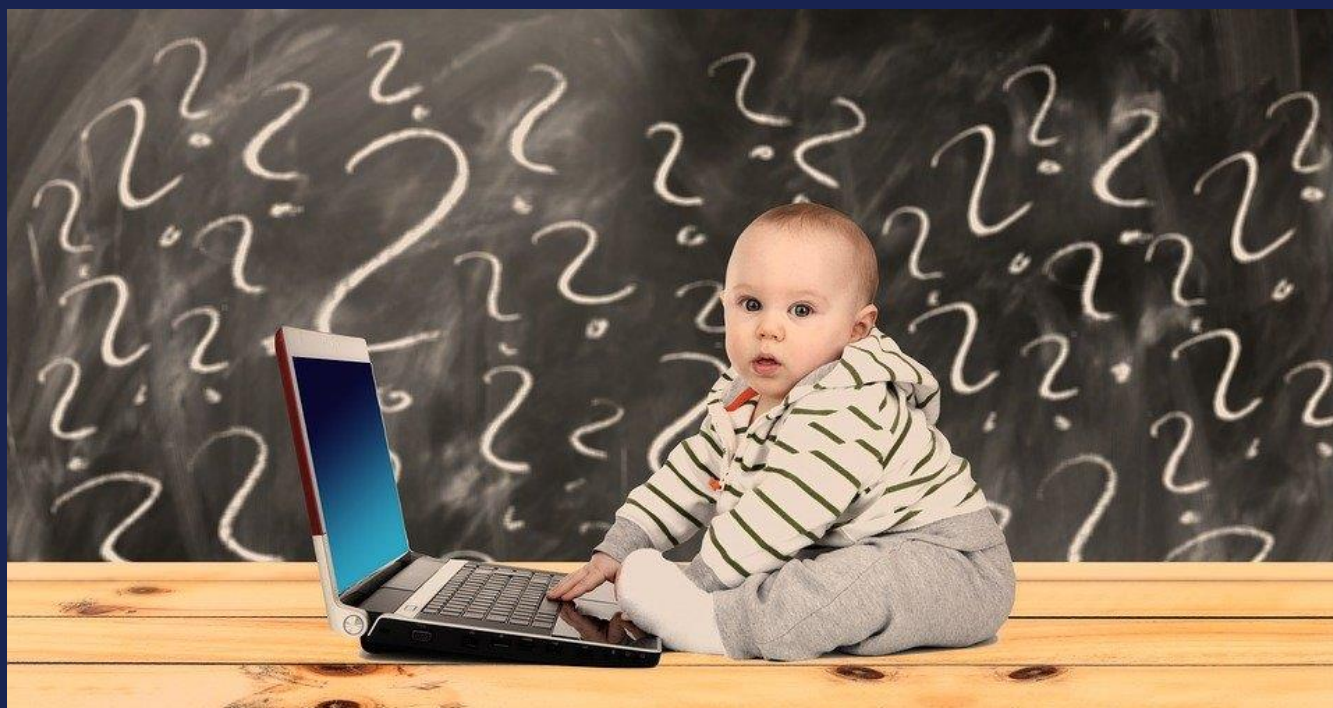
TEXAS
Health and Human
Services

- Developing training to increase awareness of ECI, including how and when to make an appropriate referral, for CPS caseworkers.
- Increasing collaboration between ECI and CPS staff at the local level.
- Creating more collaboration opportunities for ECI staff and teachers from the Regional Day School Programs for the Deaf.

Questions?



TEXAS
Health and Human
Services





TEXAS
Health and Human
Services

Thank you
