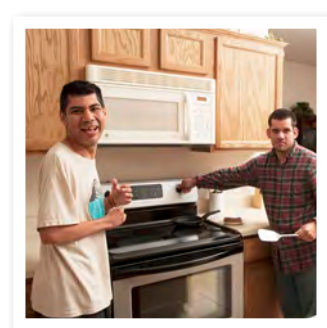
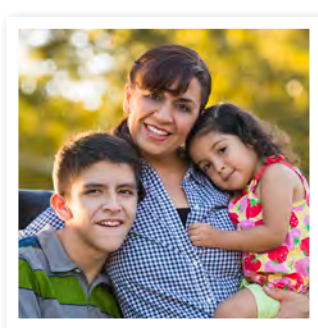
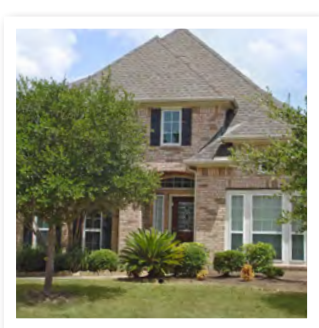
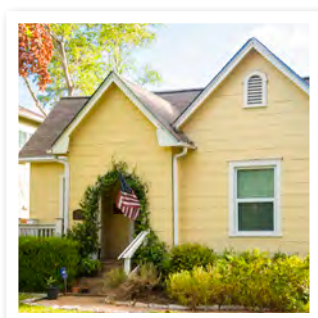
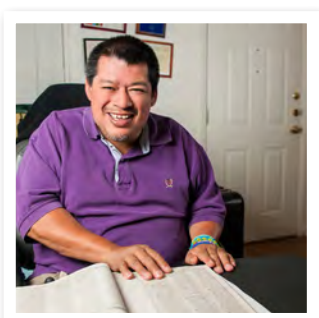


# MAKING INFORMED CHOICES



**Community Living Options  
for Nursing Facility  
Residents**





# Introduction



This workbook is intended for use by local intellectual and developmental disability authority, or LIDDA, service coordinators working with people with an intellectual and developmental disability, or IDD, who live in nursing facilities. It can help residents explore community living options. If a resident has a legally authorized representative, or LAR, the service coordinator should get the LAR's permission to use this or any other information with the resident.

Service coordinators can use the pictures in this workbook to help residents identify the types of places they might want to live and with whom. It is to be used in discussions with them to help them consider their options in community living.

Depending on the person's capacities, the workbook may be used solely with the person; otherwise, the service coordinator may need to enlist the help of someone who knows the person and is familiar with their communication skills. This person could be the LAR, a family member or a friend. It might also be a professional, such as a speech therapist or sign language interpreter. In addition to the experience with this workbook, service coordinators might find it beneficial to arrange visits to different types of residences.

Several Medicaid-funded programs provide comprehensive or essential community services and supports:

- STAR+PLUS waiver (residential component available)
- Community Living Assistance and Support Services, or CLASS, waiver program
- Home and Community-based Services, or HCS, waiver program (residential component available)
- Deaf Blind with Multiple Disabilities, or DBMD, waiver program (residential component available)

Some community programs provide residential services, such as a group home, foster care, or an assisted living facility. All of the programs are available to people who live in their own home or their family's home.

# Who do you want to live with?



**Myself**



**A family**



**A small group**



**A large group**



# Where do you want to live?

**In a small house**



**In an apartment**



**In a large house**



**Where I live now**



# What activities do you like?



**Shopping for groceries**



**Making food in the kitchen**



**Having fun with friends**



**Going to community events**



# Do you like the city or a small town?

## City



## Small town

