

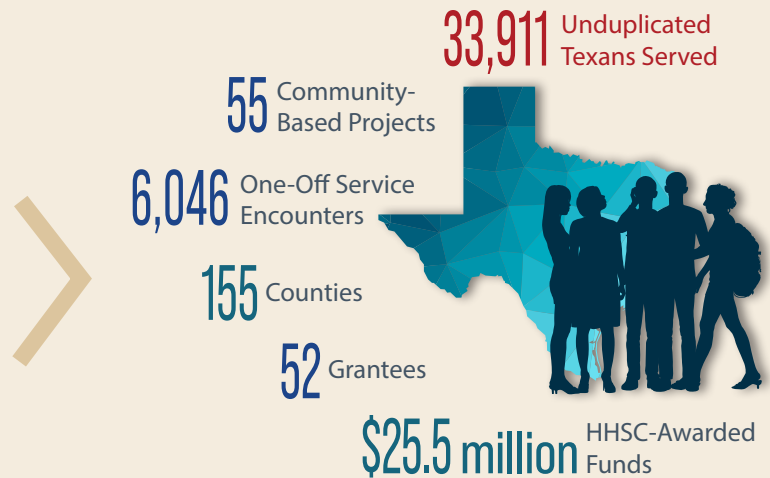
FY 2024

2024 PROGRAM REPORT CARD

Community Mental Health Grant

Program Overview

The Community Mental Health Grant program supports comprehensive, data-driven behavioral health systems that promote wellness and recovery. The program fosters community collaboration, reduces duplication of services and strengthens continuity of care. Mental and behavioral health programming provided through the grant consists of five distinct service types: access to care, co-occurring disorder and substance use disorder services, crisis and forensic services, peer support services, and school-based and early intervention services.



TEXAS-SIZED ACHIEVEMENTS

The Community Mental Health Grant made progress in fulfilling program goals and positively impacting Texas communities.

Serving Rural Texas

The grant program increased access to behavioral health services in rural Texas communities.

- **28 grant-funded projects** served **136 rural counties**.
- **8,500 rural Texans were connected** to individualized behavioral health services.

Outcomes of rural services include:

Increased Rural Community Capacity

- **74 trainings conducted and over 1,300 people trained** in behavioral health-related subjects.
- 112 community engagement events held.
- 299 support groups conducted.

Increased Well-Being and Adverse Event Prevention

- **Arrest Prevention Rate: 96%**
- **Improved Social Supports*: 81%**
- **Improved Quality of Life*: 77%**
- **Improved Resiliency Rate*: 793 program participants**

Increased Wellness and Cost-Effectiveness

The grant program supports made state-funded behavioral health programming more cost-effective and helped create more positive outcomes.

Decreased Emergency Response Utilization

- **Hospitalization Rate: 85% of program participants** avoided hospitalization for behavioral health services.
- **Emergency Room Utilization Rate: 86% of program participants** avoided visiting the emergency room for behavioral health services.

Increased Well-Being

- **Arrest Prevention Rate: 89%**
- **Improved Social Supports*: 83%**
- **Improved Quality of Life*: 74%**
- **Improved Resiliency Rate*: 3,100 program participants**

**As indicated by evidence-based measurement scales.*

Youth Mental Health in Public Schools

Over 8,000 students received individualized mental health services.

- **Behavior in School: 4,029 students** achieved behavioral **improvement in academic settings**.
- **Academic Progress: 1,990 students** achieved **improved grades**.
- **Academic Attendance: 2,957 students** achieved **improved attendance**.

FY 2024 GRANTEEES

Baptist Hospitals of Southeast Texas	MHMR of Tarrant County
Betty Hardwick Center	MHMR Services for the Concho Valley
Bluebonnet Trails Community Services	Montrose Counseling Center
Border Region Behavioral Health Center	NAMI Texas, Inc.
Boys and Girls Club of Pharr	Next Step Community Solutions, Inc.
Burke Center	North Texas Behavioral Health Authority
Camino Real Community Services	Pecan Valley Centers
Child and Family Guidance Center of Texoma	Project Vida Health Center
City of Amarillo Public Health Department	Rural Economic Assistance League, Inc.
City of Laredo Public Health Department	Rusk Independent School District
Coastal Plains Community Center	SAMMinistries (San Antonio Metropolitan Ministries, Inc.)
Collin County, Texas	San Antonio Clubhouse
Communities in Schools of North Texas	Spindletop Center
Comm Unity Care	Texas A&M International University
Community Hope Projects, Inc.	Texas A&M University
DePelchin Children's Center	Texas Panhandle Centers
Family Service Association of San Antonio	The Dallas-Fort Worth Hospital Council Foundation
Foundations Communities	The Ecumenical Center
Gulf Bend Center	The Harris Center for Mental Health and Intellectual and Developmental Disabilities
Hale County, Texas	The Women's Home
Harris County, Texas	Tri-County Behavioral Healthcare
Healthcare for the Homeless - Houston	United Way Amarillo Canyon (Panhandle Behavioral Health Alliance)
Heart of Texas Region MHMR Center	University of Texas Health Science Center at San Antonio
Helen Farabee Centers	West Texas Centers
Hill Country Centers	
Hope Fort Bend Clubhouse	
Integral Care	
Juvenile Outreach and Vocational Educational Network (JOVEN)	

Success Story

Heart of Texas Region My Health My Resources (MHMR) Center To Infinity and Beyond Initiative

The Community Mental Health Grant has allowed the Heart of Texas Region MHMR Center to recruit, hire and retain vital behavioral health staff to support work across their vast rural service area. Certified Peer Provider services and Certified Family Partner support has also increased due to grant funding.

One family taking part in the To Infinity and Beyond Initiative, while also receiving services from the Children's Autism Program, has benefited greatly from case management and psychiatric medication services. When Heart of Texas began providing family partner services, the parents expressed major concerns with their son's anxiety, depression and addiction to electronic devices.

Today, their son, who previously could not focus or hold a conversation with his case manager for longer than a few minutes, actively participates in weekly hour-long sessions. He now steps out of his comfort zone to talk to his neighbors when passing by, tries new foods, and adds exercise into his daily routine.

These positive changes have helped the whole family. His parents learned helpful parenting techniques through family partner services to better meet their child's needs within the home and to better advocate for him within the community.