



**TEXAS**  
Health and Human  
Services

# State Strategies to Support Local Stakeholders at the Intersection of Behavioral Health and Justice

**Catie Bialick, MPA**

Director of Behavioral Health and  
Justice Initiatives

**Liz Conville**

Technical Assistance Coordinator

**Office of Forensic Coordination  
Texas Health & Human Services**

**June 22, 2023**

# Agenda

---

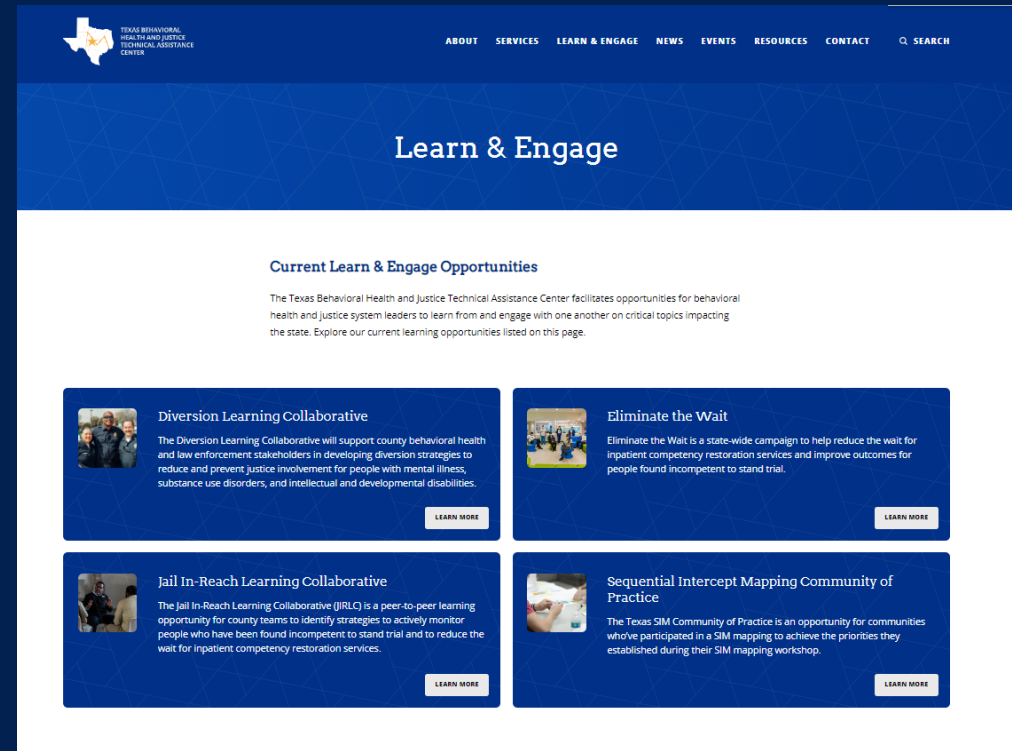
- Technical Assistance (TA) Center Overview
- Ways to Engage
  - Strategic Planning
  - Learning Collaboratives
  - State Campaigns and Stakeholder Networks
  - Tailored Training and Technical Assistance
- TA Request Process
- Site Analytics and Key Themes
- Questions and Answers



# Texas Behavioral Health and Justice Technical Assistance Center



TEXAS  
Health and Human  
Services



[www.TXBHJustice.org](http://www.TXBHJustice.org)

# Partners



TEXAS  
Health and Human  
Services



MEADOWS  
MENTAL HEALTH  
POLICY INSTITUTE



Hogg Foundation  
for Mental Health



# Timeline



TEXAS  
Health and Human  
Services

2021



TTI Grant  
Received



TIEMH Contract  
Developed



Hogg Foundation  
Study Completed



Planning  
Workgroups  
Engaged



2022



TA Initiatives  
Launched



MHBG Funding  
Secured



Agency Partners  
Identified



Content Developed



2023



Website  
Launched





# Ways to Engage



TEXAS  
Health and Human  
Services



**Strategic Planning  
Workshops**



**Learning Collaboratives**



**Tailored County and  
Regional Trainings**



**State Campaigns and  
Stakeholder Networks**



# Strategic Planning



TEXAS  
Health and Human  
Services

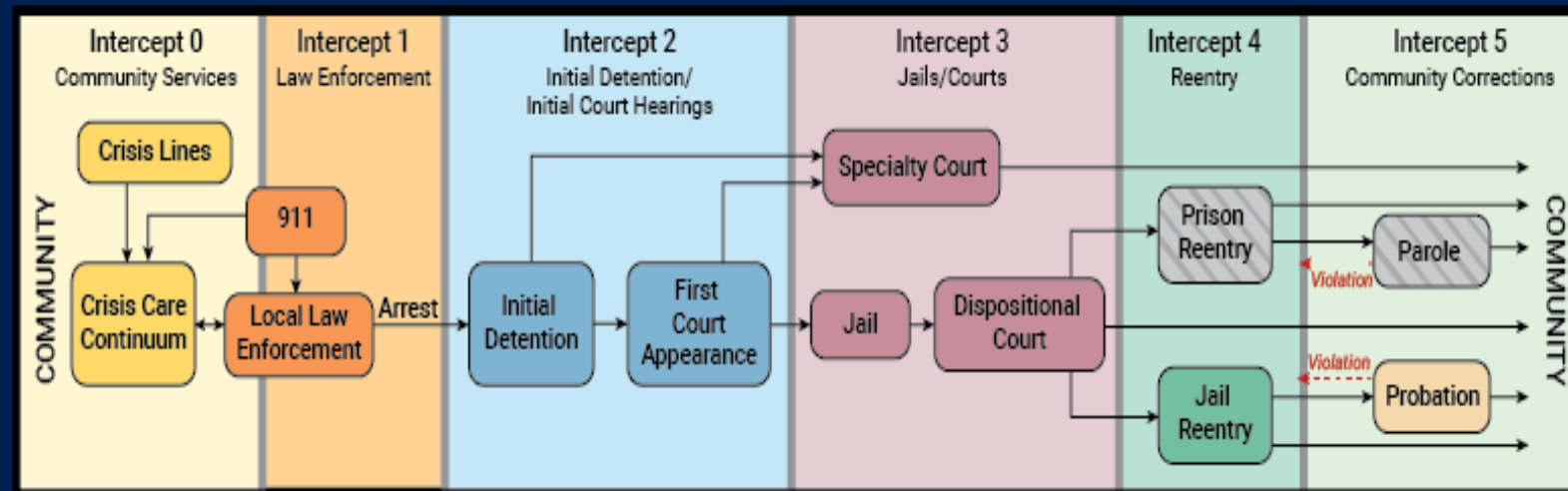


The TA Center supports county strategic planning efforts by facilitating adult and youth Sequential Intercept Model (SIM) Mapping Workshops across the state.

# SIM Mapping Initiative



TEXAS  
Health and Human  
Services



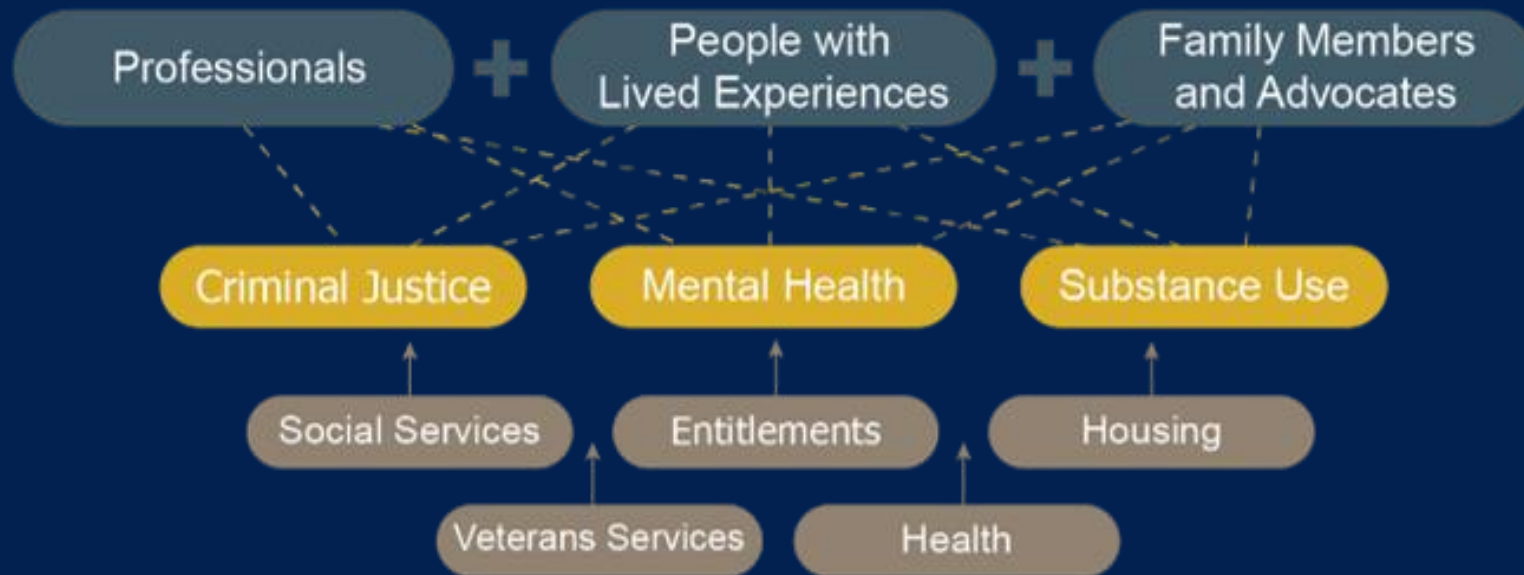
Sequential Intercept Model (SIM)



# SIM Mapping Workshops



TEXAS  
Health and Human  
Services



# SIM Mapping by the Numbers



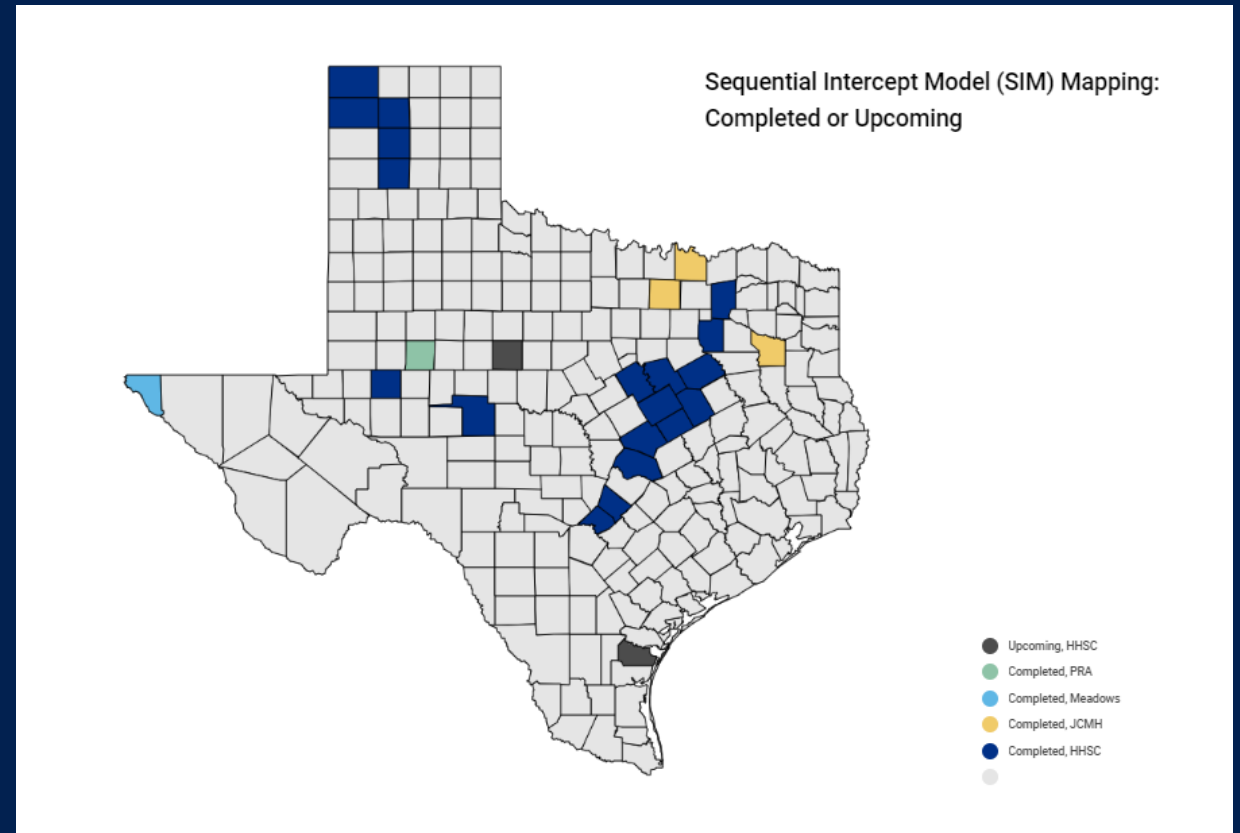
TEXAS  
Health and Human  
Services

13 SIM Mapping  
Workshops Completed

13 Behavioral Health  
Leadership Teams  
created

12 New programs  
and initiatives

21 Counties engaged



# Adult Workshops and Trainings

	In-Person or Virtual	Focus	Training Credits	Hours
Adult SIM Mapping Workshop	In-Person	County	✓	9 hours (over 2 days)
Intercept 0 & 1 Training, Mapping and Action Planning Community Services, Law Enforcement and Emergency Medical Services	Virtual	County or Region	✓	4 hours
Intercept 2 & 3 Training, Mapping and Action Planning Jails and Courts	Virtual	County or Region	✓	4 hours
Intercept 4 & 5 Training, Mapping and Action Planning Reentry, Community Corrections, and Community Supports	Virtual	County or Region	✓	4 hours



# State-Local Collaboration to Modify the SIM for Youth



TEXAS  
Health and Human  
Services

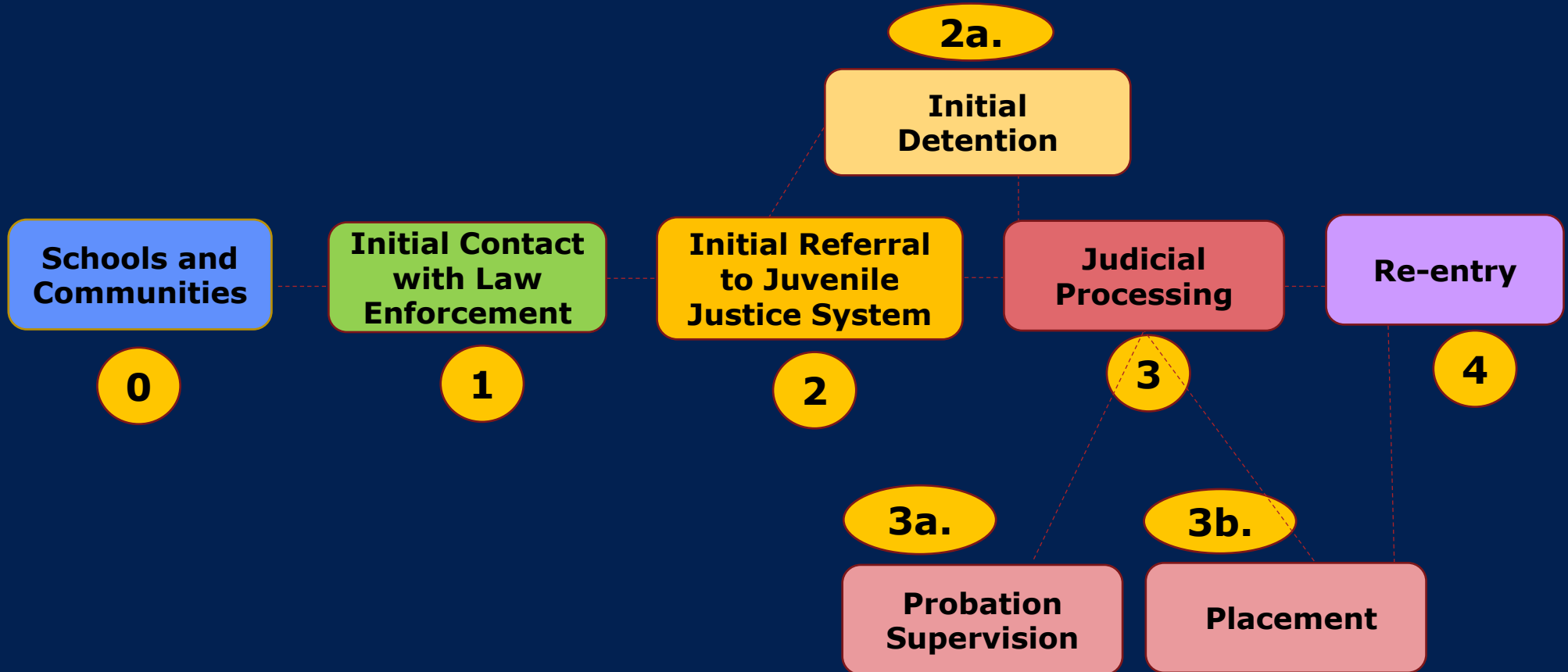
Communities want to understand how youth with Mental Illness (MI), Substance Use Disorder (SUD), and Intellectual and Developmental Disabilities (IDD) are connected to behavioral health and crisis services in the community, as well as how they encounter and move through the juvenile justice system.



# The Texas Youth SIM Model



TEXAS  
Health and Human  
Services



Collaboration

Identification

Diversion

Treatment



# Youth Workshops and Trainings

	In-Person or Virtual	Focus	Training Credits	Hours
Youth SIM Mapping Workshop	In-Person	County	✓	9 hours (over 2 days)
Behavioral Health and the Juvenile Justice System Webinar	Virtual	Statewide	✓	2 hours
Intercept 0 & 1 Training, Mapping and Action Planning Community Services, Schools, Law Enforcement and Emergency Medical Services	Virtual	County or Region	✓	4 hours
Intercept 2 & 3 Training, Mapping and Action Planning Initial Referral to the Juvenile Justice System and Judicial Processing	Virtual	County or Region	✓	4 hours
Intercept 0 & 4 Training, Mapping and Action Planning Reentry, Community Corrections and Community Supports	Virtual	County or Region	✓	4 hours



**TEXAS**  
Health and Human  
Services

# State Campaigns and Stakeholder Networks



TEXAS  
Health and Human  
Services



The TA Center promotes state campaigns and stakeholder networks to improve forensic services and reduce and prevent justice involvement for people with MI, SUD and IDD.

# Eliminate the Wait (ETW)



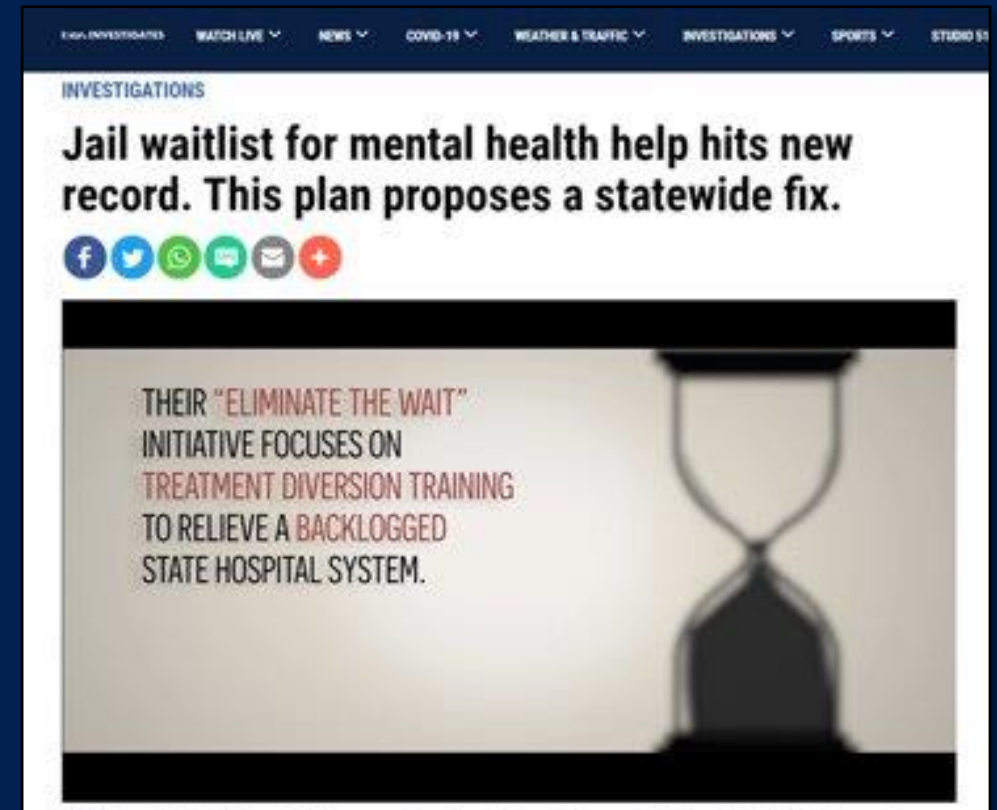
TEXAS  
Health and Human  
Services

Statewide campaign and resources to help reduce the wait for inpatient competency restoration services

**Campaign**

**Microsite  
and  
Resources**

**Trainings  
and  
Forums**



# Competency Restoration (CR) Resources



TEXAS Health and Human Services

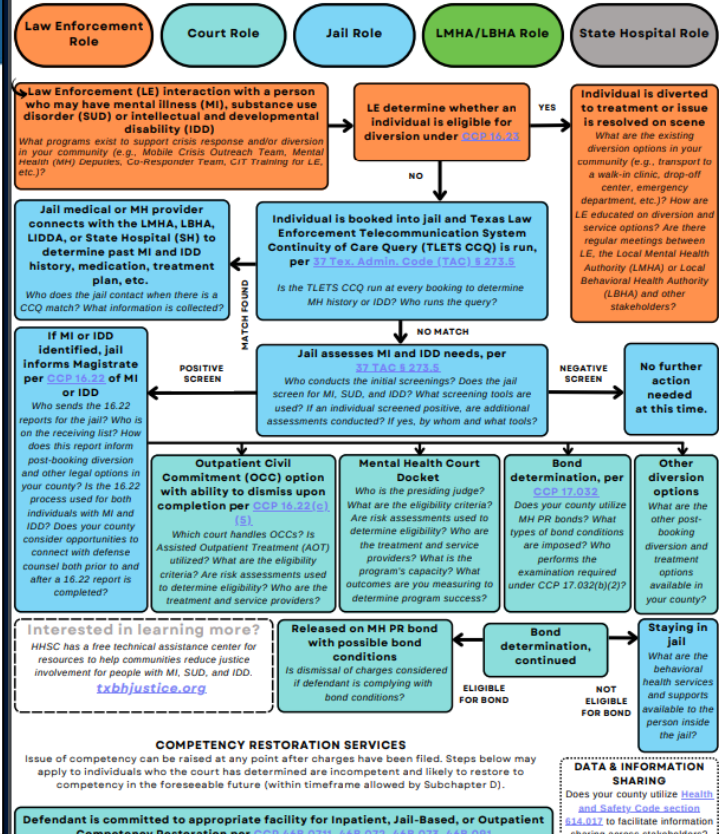
## ELIMINATE the WAIT

The Texas Toolkit for Rightsizing Competency Restoration Services

October 2021



## Diversions & Competency Workflow



## Six Steps to Establishing a Jail In-Reach Program



April 2023



# CR Toolkit



TEXAS  
Health and Human  
Services

- Developed through a collaborative process with federal, state, and local partners with expertise on CR
- Toolkit contents:
  - Overview of CR system in Texas
  - Principles to support efficient and effective CR services
  - CR placement decision-tree
  - Informational video series
  - CR research library
  - Best practices for competency evaluators and competency evaluations
  - CR system flow charts
  - TA Center CR "microsite"



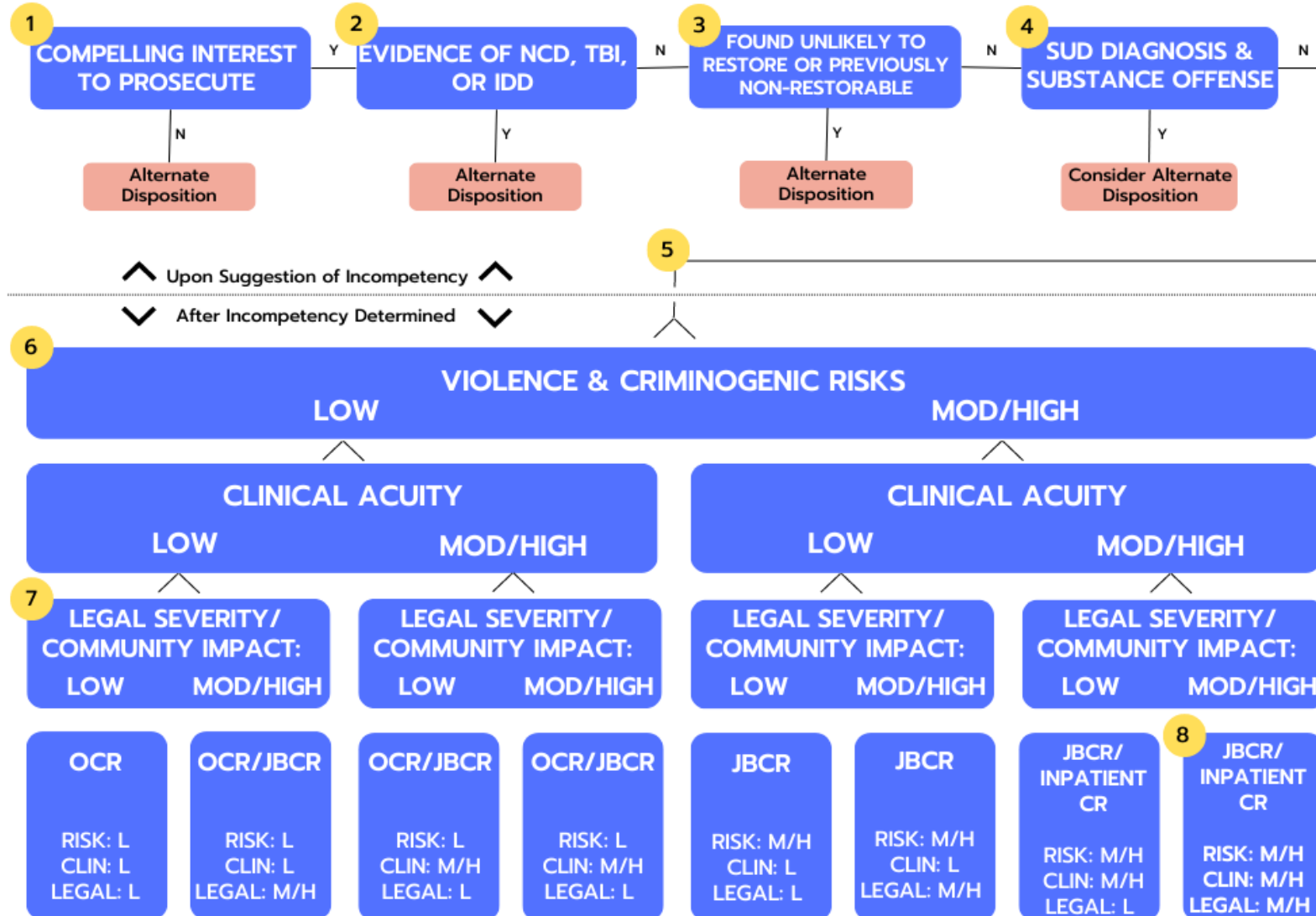


# CR Toolkit (2 of 2)



TEXAS  
Health and Human  
Services

## CR Placement Decision-Tree



# ETW Trainings and Forums



TEXAS  
Health and Human  
Services



## ELIMINATE THE WAIT CENTRAL TEXAS REGIONAL FORUM

	In-Person or Virtual	Focus	Training Credits	Hours
ETW Regional Forum	In-Person	Region	✓	8 hours
ETW Competency Restoration Overview and Resources Webinar	Virtual	Statewide	✓	2 hours
ETW County Training and Action Planning	Virtual	County or Region	✓	4 hours
Establishing a Jail In-Reach Program	Virtual	County or Region	✓	4 hours
Court Ordered Medications	Virtual	County or Region	✓	4 hours

**When**  
Dec. 1, 2022  
8 a.m. – 3 p.m.

**Where**  
Austin

2200570 - HHSC MSS - Sept. 2022



# Learning Collaboratives



TEXAS  
Health and Human  
Services



The TA Center facilitates opportunities for behavioral health and justice system leaders to learn from and engage with one another on critical topics impacting the state.

# Jail In-Reach Learning Collaborative



TEXAS  
Health and Human  
Services



Peer-to-peer learning for county forensic teams (behavioral health providers, judges, prosecutors, attorneys, and jail staff). Strategies to actively monitor and reduce the wait for inpatient competency restoration services.

**28**

Counties engaged in cohorts one and two of the JIRLC

**79**

Referrals received in Fiscal Year (FY) 23 for Trial Competency Re-examinations, MSU Waiver Reconsiderations, Forensic and Clinical Service Consultations, Legal Education and Planning Support.

**19**

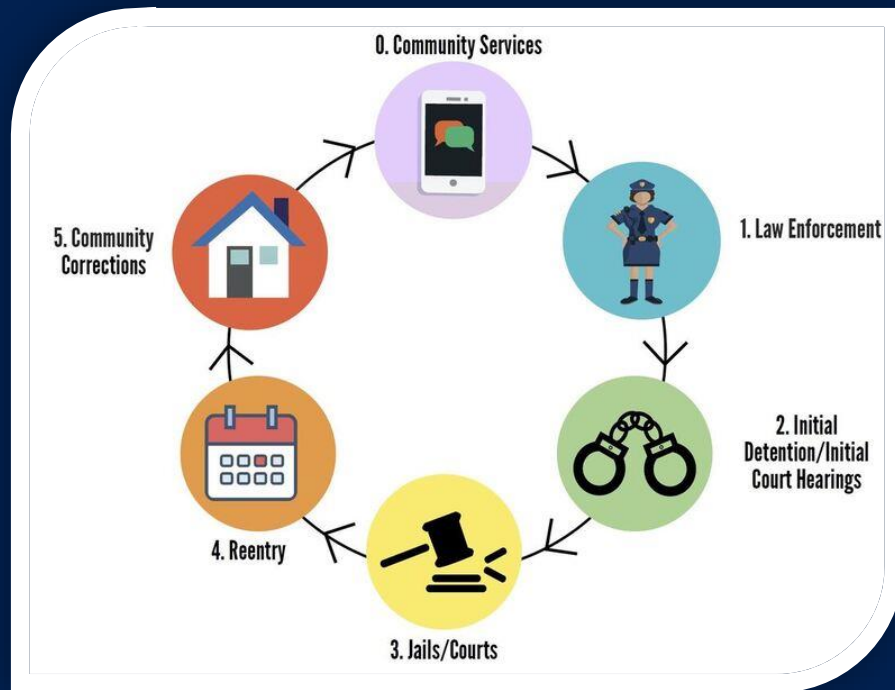
Individuals removed from the waitlist FY23



# SIM Community of Practice



TEXAS  
Health and Human  
Services



- Peer-to-peer learning opportunity for counties who have participated in a SIM Mapping Workshop
- Strategies to support implementation of action plans developed during SIM Mapping Workshops.
- **Applications closed. First cohort is underway.**





# Diversion Learning Collaborative



TEXAS  
Health and Human  
Services



- Peer-to-peer learning for county behavioral health and law enforcement stakeholders
- Strategies to support pre-arrest diversion, including police-mental health partnerships, crisis call diversion, diversion centers, remote co-response.
- **Applications closed. Learning Collaborative begins August 2023.**



# Suicide Care in Juvenile Justice Settings Prevention Learning Collaborative



TEXAS  
Health and Human  
Services



- Peer-to-peer learning opportunity for county behavioral health and juvenile justice system stakeholders.
- Strategies to adopt and implement the Zero Suicide Framework within local juvenile justice settings.
- Opportunities to participate in a train the trainer series to increase suicide prevention trainings for juvenile justice system stakeholders.
- **Applications open Fall 2023.**



# Adult Reentry Learning Collaborative



TEXAS  
Health and Human  
Services



- Peer-to-peer learning opportunity for counties interested in strengthening reentry efforts
- Strategies to address barriers to reentry from jails and discharges from state hospitals and improve access to community-based care.
- Resources will include reentry toolkit, instructional videos, and ongoing technical support.
- **Applications open Winter 2023.**





# Tailored Training and Technical Assistance



TEXAS  
Health and Human  
Services



The TA Center offers specialized resources and tailored trainings for behavioral health and justice stakeholders.

# Tailored Trainings and Technical Assistance



TEXAS  
Health and Human  
Services

**Tailored  
Trainings**

**Targeted  
Support**

**Webinars**

## 2023 TA Center Webinar Series

August Behavioral Health and the Juvenile Justice System

October Competency Restoration: Resources to Support Counties

December Planning, Implementing, and Funding Pre-Arrest Diversion Strategies

**CEUs, CLEs and TCOLE Credits**

Sign up for the bi-monthly newsletter at [www.txbhjustice.org](http://www.txbhjustice.org).



# Technical Assistance Request Process

## Requesting Agency or Organization

- Submits request. Examples:
- Training on Competency Restoration
  - Peer in-reach and re-entry resources
  - Presentation on pre- and post- booking diversion options
  - Diversion Center planning consultation

## OFC Technical Assistance Coordinators

- Vets the request
- Connects with HHSC experts, partner agencies and collegial network to gather resources
- Puts together recommendation

## HHSC Leadership and State Agency Partners

- Receives reports on TA trends
- Shares ideas for new TA opportunities
- Collaborates with the OFC in developing new TA initiatives

HOW CAN WE HELP?  
Request Technical Assistance

NAME *	ORGANIZATION *
TITLE/ROLE	EMAIL *
PHONE *	PRIMARY COUNTY *
<p><b>SERVICE AREA</b> What area of Behavioral Health or Justice system are you seeking technical assistance for?</p> <input type="checkbox"/> Crisis Services <input type="checkbox"/> Substance Use Services <input type="checkbox"/> Veterans Services <input type="checkbox"/> Peer-Support Services <input type="checkbox"/> Housing <input type="checkbox"/> Law Enforcement <input type="checkbox"/> Courts <input type="checkbox"/> Community Corrections <input type="checkbox"/> Jail/Juvenile <input type="checkbox"/> Data <input type="checkbox"/> Pretrial Services <input type="checkbox"/> Community Reentry <input type="checkbox"/> Probation Services <input type="checkbox"/> Parole Services <input type="checkbox"/> Juvenile Justice	<p><b>REQUEST TYPE</b> Please check all that apply</p> <input type="checkbox"/> Request a Resource <input type="checkbox"/> Peer-to-Peer Connection <input type="checkbox"/> Expert Consultation <input type="checkbox"/> Tailored Training
<p><b>DESCRIPTION</b> Please describe the request.</p>	<p><b>DESIRED OUTCOME</b> Please describe the desired outcome.</p>

I am interested in receiving technical assistance.

**SUBMIT**

# Website and Request Analytics



TEXAS  
Health and Human  
Services

Month	Total Users	Total New Users	Sessions	Engaged Sessions	Total TA Requests
May	1,090	1,061	1,774	861	6
June	1,588	1,511	2,155	1,090	19
July	595	541	992	507	13
<b>Total</b>	<b>3,273</b>	<b>3,113</b>	<b>4,921</b>	<b>2,458</b>	<b>38</b>

# TA Topics and Outcomes



TEXAS  
Health and Human  
Services





TEXAS  
Health and Human  
Services

# Questions?

---



TEXAS  
Health and Human  
Services

# Please Stay in Touch!

---

[www.TXBHJustice.org](http://www.TXBHJustice.org)  
[forensicrodirector@hhs.texas.gov](mailto:forensicrodirector@hhs.texas.gov)