



TEXAS  
Health and Human  
Services

# Early Childhood Intervention Program Update

---

**Early Childhood Intervention  
Advisory Committee Meeting  
April 24, 2024**

# ECI Program Update

---



TEXAS  
Health and Human  
Services

- Quarterly data
- Training and outreach
- State office staff update
- Office of Special Education Programs (OSEP) Early Intervention Personnel Retention Grant project
- Texas Workforce Commission (TWC) funded initiatives
- Preschool Development Grant (PDG)
- ECI Request for Information HHS0014461



TEXAS  
Health and Human  
Services

# Quarterly Data

---

# Children Referred, Evaluated, and Served



TEXAS  
Health and Human  
Services

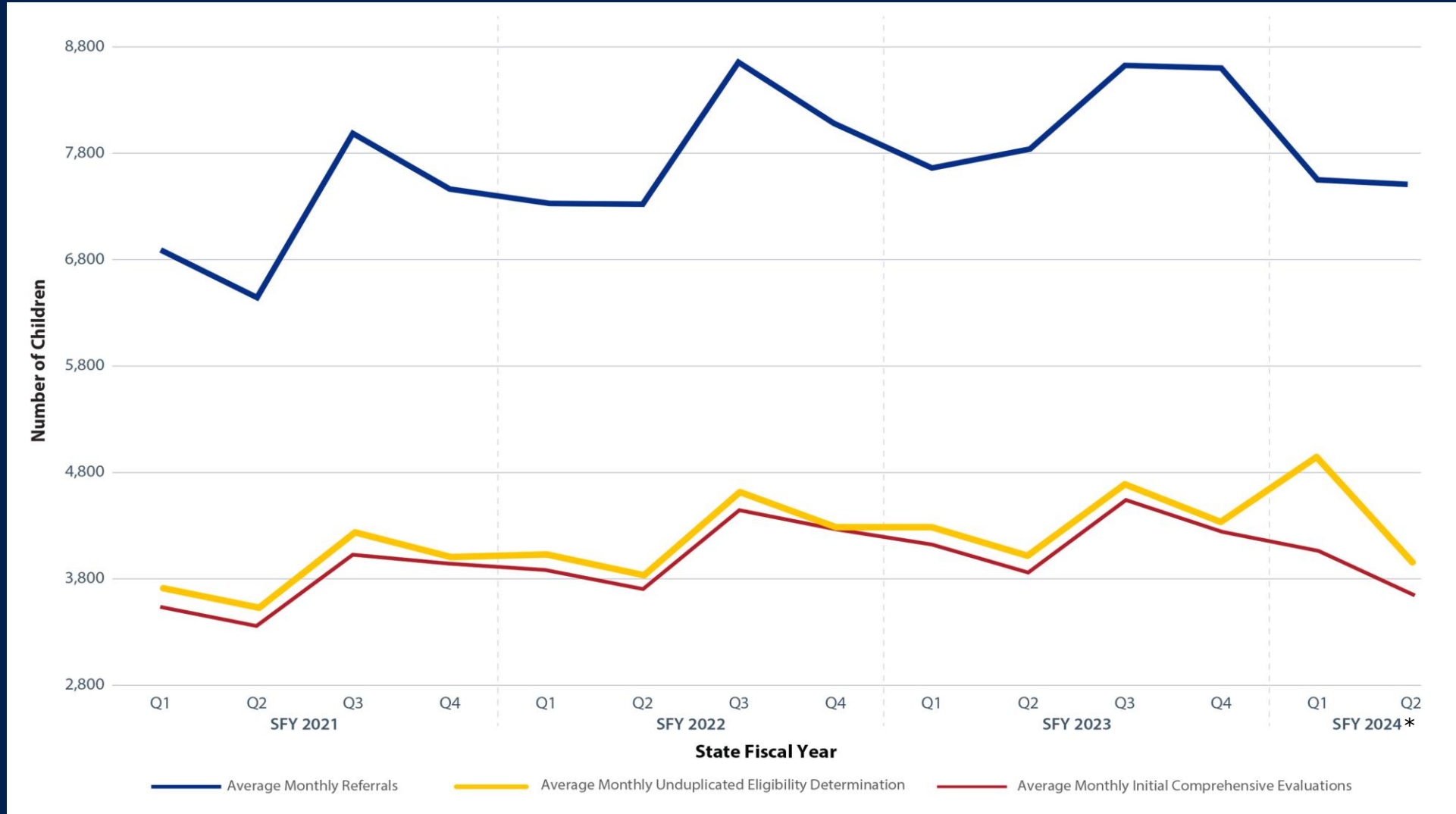
	SFY 2021	SFY 2022	SFY 2023	SFY 2024 Q1	SFY 2024 Q2*
<b>Average Monthly Referrals</b>	<b>7,193</b>	<b>7,848</b>	<b>8,046</b>	<b>7,576</b>	<b>7,523</b>
<b>Average Monthly Unduplicated Eligibility Determination</b>	<b>3,872</b>	<b>4,189</b>	<b>4,327</b>	<b>4,934</b>	<b>3,957</b>
<b>Average Monthly Initial Comprehensive Evaluations</b>	<b>3,735</b>	<b>4,099</b>	<b>4,191</b>	<b>4,064</b>	<b>3,648</b>
<b>Average Monthly Enrolled</b>	<b>27,860</b>	<b>30,835</b>	<b>31,980</b>	<b>31,935</b>	<b>32,034</b>
<b>Average Monthly Comprehensive Served</b>	<b>30,516</b>	<b>33,732</b>	<b>35,055</b>	<b>34,996</b>	<b>34,851</b>
<b>Cumulative Quarterly/Annual Children Served (unduplicated)</b>	<b>60,204</b>	<b>65,584</b>	<b>67,512</b>	<b>41,155</b>	<b>49,577</b>

\*Data from the most recent quarter may be incomplete and is subject to change.

# Referrals, Eligibility Determination, Evaluations



TEXAS  
Health and Human  
Services

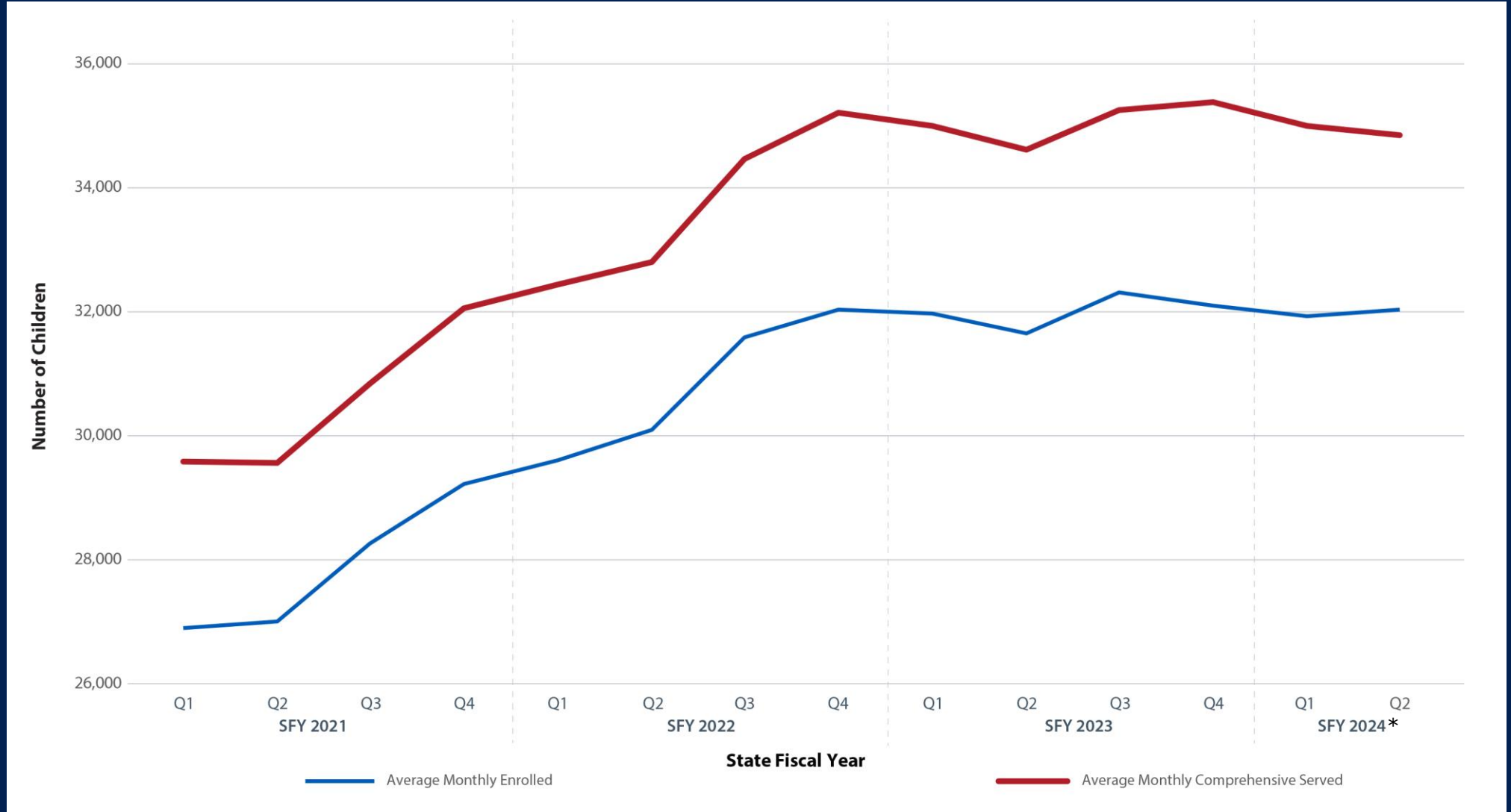


\*Data from the most recent quarter may be incomplete and is subject to change.

# Enrolled and Served



TEXAS  
Health and Human  
Services



\*Data from the most recent quarter may be incomplete and is subject to change.

# Delivered Services



TEXAS  
Health and Human  
Services

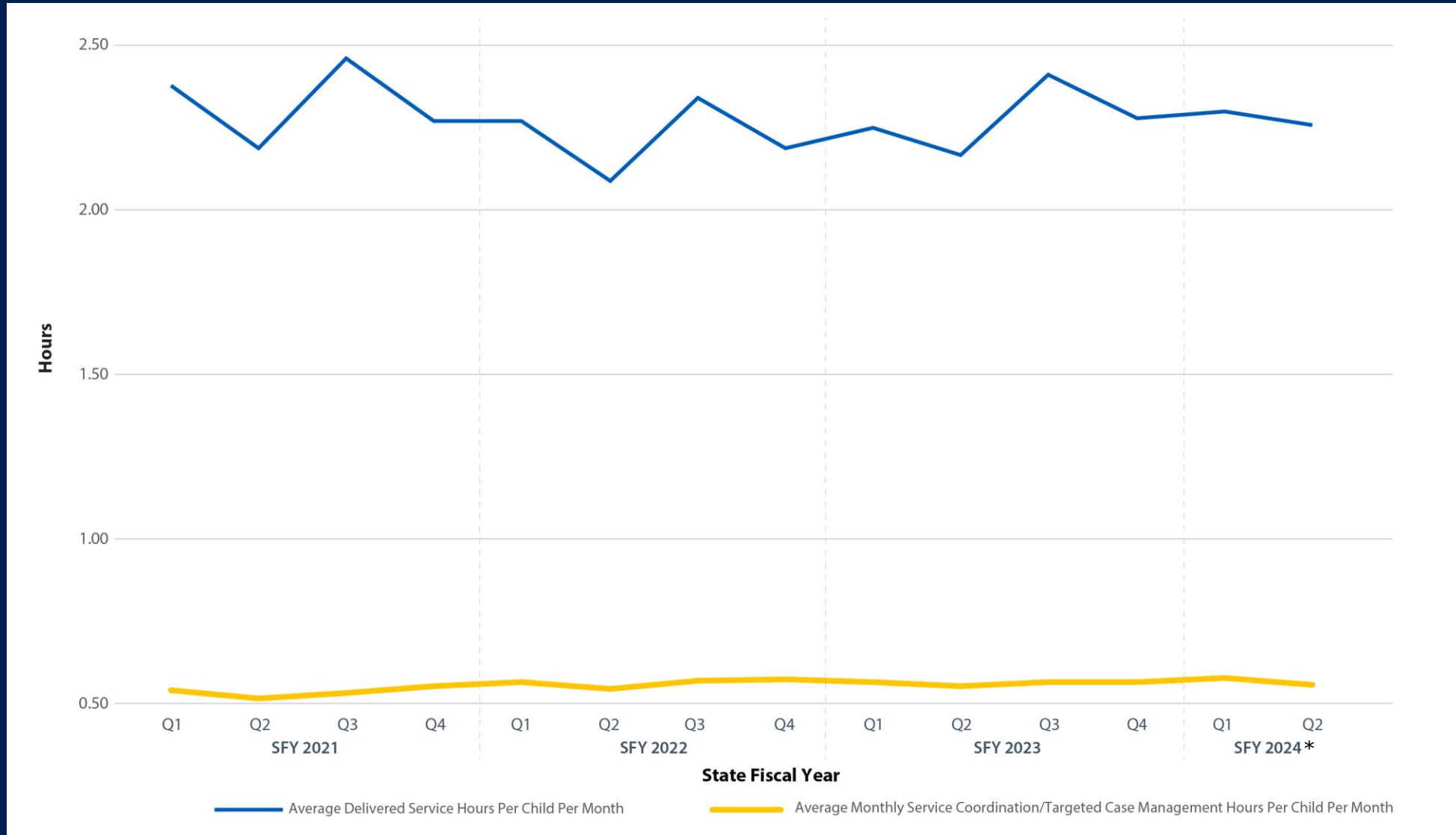
	SFY 2021	SFY 2022	SFY 2023	SFY 2024 Q1	SFY 2024 Q2*
<b>Average Monthly Delivered Service Hours (not parent-arranged)</b>	<b>70,999</b>	<b>74,954</b>	<b>79,708</b>	<b>80,707</b>	<b>78,759</b>
<b>Average Service Hours Per Child Per Month</b>	<b>2.33</b>	<b>2.22</b>	<b>2.27</b>	<b>2.30</b>	<b>2.26</b>
<b>Average Monthly Service Coordination (SC)/Targeted Case Management (TCM) Hours</b>	<b>6,052</b>	<b>7,970</b>	<b>9,186</b>	<b>9,903</b>	<b>9,307</b>
<b>Average SC/TCM Hours Per Child Per Month</b>	<b>0.54</b>	<b>0.57</b>	<b>0.57</b>	<b>0.58</b>	<b>0.56</b>

\*Data from the most recent quarter may be incomplete and is subject to change.

# Average Service Hours Per Child Per Month



TEXAS  
Health and Human  
Services



\*Data from the most recent quarter may be incomplete and is subject to change.





TEXAS  
Health and Human  
Services

# Training and Outreach

---

# SMILE Webinars

---



TEXAS  
Health and Human  
Services

Series for Meaningful Interagency Learning and Education (SMILE) webinars:

- March 2024: *Department of State Health Services Safe Infant Sleep program*

# Making it Work

---

- *Making it Work* is an online training module that ECI professionals must complete before providing services.
- ECI is in the process of a comprehensive update to improve the training experience.
- Four of nine sections have been updated and redesigned:
  - Introduction
  - Referrals
  - Initial Contact
  - Eligibility, Evaluation and Assessment



# Autism and General Behavior Management Webinars

---

- Two new upcoming webinars:
  - *ECI: Best Practices for Including Children with Autism*
  - *ECI: Behavior Management Principles in an Early Childhood Classroom*



TEXAS  
Health and Human  
Services

# Recently Attended Conferences



TEXAS  
Health and Human  
Services

Name	Date	Location
Central Texas African American Family Support Conference	February 6	Austin
Texas Speech-Language and Hearing Association Conference	February 22-24	Fort Worth
Texas Collaborative for Healthy Mothers and Babies Summit	February 28-March 1	Austin
Texas Council on Family Relations Conference	February 29-March 2	Lubbock
Texas Early Learning Collaborative Spring Symposium	April 10	Virtual
Texas Academy of Family Physicians Conference	April 12-13	Austin

# Upcoming Conferences



TEXAS  
Health and Human  
Services

Name	Date	Location
Texas Rising Star Early Educator Conference #1	April 24-26	Arlington
UT Health San Antonio School of Health Professions Career Fair	April 25	San Antonio
Texas School Ready Early Childhood Summer Institute	June 26-28	Waco
Texas Rising Star Early Educator Conference #2	July 16-19	Houston
Texas School for the Deaf Family Weekend Retreat	July 19-20	Austin



TEXAS  
Health and Human  
Services

# ECI State Office Staff Update

---

# ECI Staff Update

---

- ECI Information Specialist Trellanie Bostic retired from state service at the end of March.
- Melinda “Lindy” Warner is the new advisory committee and outreach specialist.
- Nilam Roy is the new ECI data manager.



TEXAS  
Health and Human  
Services





TEXAS  
Health and Human  
Services

# **OSEP Early Intervention Personnel Retention Grant**

---

# Spring Summit 2024

---

- ECI Empowerment Coalition for Innovative Leaders Summit
- One-day summit on April 24.
- Interactive sessions
  - Recruitment and retention strategies
  - Recruitment and retention in a multigenerational workforce
  - Developing personal and organizational goals
  - Leadership and sustainability



TEXAS  
Health and Human  
Services

# Professionalism Engagement Empowerment Resources (PEER) Network

---



TEXAS  
Health and Human  
Services

- Currently 374 members in the PEER Network.
- Discussions for 2024 so far:
  - Resources for Families
  - Common Challenges Working with Families
- Webinars for 2024:
  - *Best Practices for Working with Children with Autism* on March 5.
  - *Documentation and the Interdisciplinary Team* on June 4.
  - *Ethical Scenarios* on September 3.
  - *Dual Roles: Service Coordination, Specialized Skills Training and Beyond* on December 3.

# Annual Performance Report

---

- Collecting and analyzing data
- Identifying impact of grant activities on retention
- Reporting on progress and activities
- Data will be shared at next meeting



TEXAS  
Health and Human  
Services



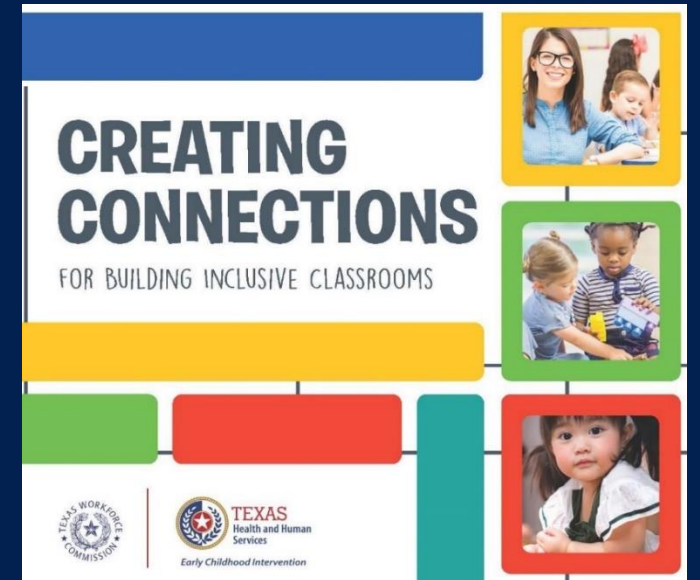
TEXAS  
Health and Human  
Services

# **Texas Workforce Commission Funded Initiatives**

---

# TWC-ARPA Grant Activities

- TWC-American Rescue Plan Act (ARPA) funds were available to ECI programs June 2022 through January 2024.
- ECI programs provided training to child care programs, reaching more than 3,500 child care professionals.
- ECI providers contracted with First3Years for Infant Mental Health Endorsements.
- ECI hosted four regional conferences, reaching 21 ECI programs and 213 child care programs.



TEXAS  
Health and Human  
Services

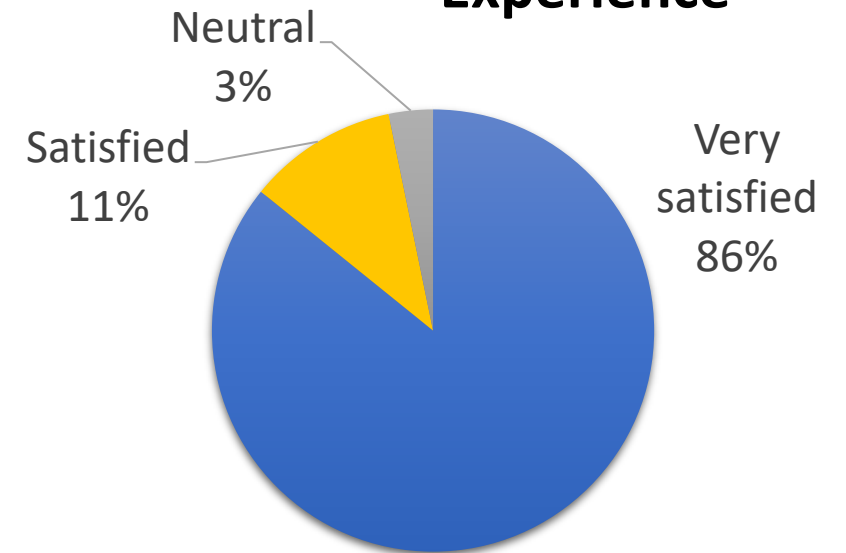
# Conference Evaluation



## Sample feedback

- *"Everything was awesome. I would love to attend another conference."* (Denton)
- *"Valuable information to share for our trainings and presentations in the community."* (El Paso)
- *"Loved hearing the personal experiences and feedback from the parent panelists."* (Houston)
- *"I enjoyed all the speakers, gaining ideas and knowledge, and hearing from parents was amazing!"* (San Marcos)

## Overall Conference Experience





TEXAS  
Health and Human  
Services

# Preschool Development Grant

---



# Preschool Development Grant (PDG)

---

- Texas was awarded \$16 million for calendar year 2024.
- ECI was awarded \$5.1 million for:
  - Comprehensive ECI services
  - ECI subrecipient staff recruitment, retention, and mentoring activities
  - Training for local early learning programs
- Funding will be available to ECI programs in April 2024.



TEXAS  
Health and Human  
Services

# Texas Early Learning Strategic Plan

---

## Texas Early Learning Council (TELC)

- Developed by TELC as part of the Texas Preschool Development Grant
- Includes four focus areas for the years 2024-2026
  - Family access, navigation, and engagement
  - Workforce recruitment, retention, and support
  - Local systems and partnership building
  - Data and system coordination



The plan is located on the TELC website.

[EarlyLearningTexas.org](https://EarlyLearningTexas.org)

# TELC Plan – Action 1

---

## Family Navigation, Access & Engagement

**Action 1.2.1:** HHSC ECI will continue to provide coverage for Individuals with Disabilities Education Act (IDEA) Part C services to children across the state. ECI will use PDG B-5 renewal funds to support local programs already providing high quality intervention services to children who have a disability or developmental delay.

- PDG funding for comprehensive ECI services allowable under Part C.

**Action 1.2.2:** HHSC ECI and TEA will continue child find activities.

- ECI and TEA meet monthly to coordinate child find across Texas.
- Exploring ways to improve the identification and enrollment of young children who are deaf or hard of hearing or have visual impairments.



**TEXAS**  
Health and Human  
Services

# TELC Plan – Action 2.1.1

---

## Workforce Recruitment, Retention & Support

**Action 2.1.1:** HHSC ECI therapist recruitment and retention will continue to be supported with stipends funded through PDG B-5 Renewal funding.

- PDG funding for ECI therapist hiring, retention, and mentoring incentive stipends



TEXAS  
Health and Human  
Services

# TELC Plan – Action 2.4.6

---

## Workforce Recruitment, Retention & Support

**Action 2.4.6:** HHSC ECI will continue to develop and make available trainings on inclusion of children with special needs, including autism, and on managing challenging behavior in young children.

- ECI programs have provided 48 trainings on inclusion to date in 2024
  - *Planning and Creating Inclusive Classrooms*
- Webinar on autism to be recorded in May 2024
  - *Best Practices for Including Children with Autism*
  - Presentation given at the 2023 TAEYC Conference
- New training on managing challenging behavior
  - *General Behavior Management Principles*
  - To be presented at the Texas Rising Star Conference in April 2024
  - Public access to recorded webinar in June 2024



**TEXAS**  
Health and Human  
Services

# TELC Plan – Action 2.4.4

---

## Workforce Recruitment, Retention & Support

**Action 2.4.4:** HHSC ECI will continue the PEER Network for early intervention specialists and service coordinators.

- So far in 2024, 374 early intervention specialists and service coordinators have participated in the PEER Network.



TEXAS  
Health and Human  
Services



TEXAS  
Health and Human  
Services

# ECI Request for Information (RFI)

---

# Purpose of the RFI

---

- HHSC is seeking input on several topics, including:
  - Funding
  - Performance metrics and tracking
  - Relationships and support
- Information collected as part of the RFI will be used to inform the Request for Applications to be released in fiscal year 2025, which will be used to invite grant applications for the ECI program.
- HHSC will provide a summary of RFI feedback to the ECI Advisory Committee.





# ECI RFI

---

- RFI HHS0014461 released on March 25, 2024
- The submission deadline is:  
April 24, 2024  
5:00 p.m. CDT
- The RFI may be accessed at the web address:

<https://resources.hhs.texas.gov/rfa/rfi-hhs0014461>



TEXAS  
Health and Human  
Services



TEXAS  
Health and Human  
Services

# Thank You

---

**Meghan Young, Director**

**Sharon Stone, Policy and Support Manager**

**Beatrice Watson, Special Projects Coordinator**

**Early Childhood Intervention**